

WORLDWIDE SERVICE FOR YOU

AXIOM®
D I A G N O S T I C



...with a wide range of
Diagnostic Reagents,
Analytical Instruments, Microscopes
and Lab Equipment

Table of Content

Page

Clinical Chemistry	2-4
Clinical Chemistry Instruments	5-8
Rapid Testing	9-11
Haematology	12
Microwell ELISA Systems	13
ELISA Readers and Instruments	14-15
Coagulation	16
Blood Grouping Serology	17
Blood Handling and Storage	18
Scales and Balances	19
Pipettors	19-20
LAB Equipment	21-22
Centrifuges	23-24
Sterilizers/Ovens/Incubators	25-27
Spectrophotometers	28

MICROSCOPES

BM-500 Series	29
BM-100 Series	30
Universal Series	31-32
M-22 Series, ST-Series	33
Surgical Microscopes	34
XDS-1 Inverted Microscope	35



Dear Customers and friends,

Thank you for your interest in the AXIOM Company and for your request for our products and literature.

The AXIOM Company is a leading manufacturer of Clinical Chemistry and a world wide direct supplier and exporter of Serology, Immunology, Urine Analysis, Elisa (EIA), Instruments for laboratory and hospitals. We also feature a complete range of Powervision Microscopes and Surgical Microscopes for professional use in hospitals and laboratory industries, universities, schools and students.

It is our aim to provide the best service in the industry. In order to make it easier to do business with AXIOM, we have established AXIOM US, Inc. in Miami Florida, our representative in the U.S. and Latin American countries.

Our strongest commitment to customers in the Diagnostic Ind., is to constantly improve our products and processes to meet and ultimately exceed our customers expectation and needs.

Thank you again for your interest in the AXIOM Company and products. Enclosed please find the literature you requested. If you have any questions or require additional materials, please do not hesitate to contact AXIOM in Germany or in the United States.

Best Regards

Wolfgang Hypko
President



**Gesellschaft für Diagnostica
und Biochemica mbH**

Am Jahnplatz 5 · 68642 Bürstadt/Germany
Tel.: 49-(62 06) 60 11/12 · Fax: 49-(6206) 60 13
E-Mail: Info@Axiom-Online.net
<http://www.AXIOM-ONLINE.NET>

Quality:

AXIOM attaches the highest importance to customer satisfaction and the quality of its products.

We have established a certified Quality Management System according to the international standards:

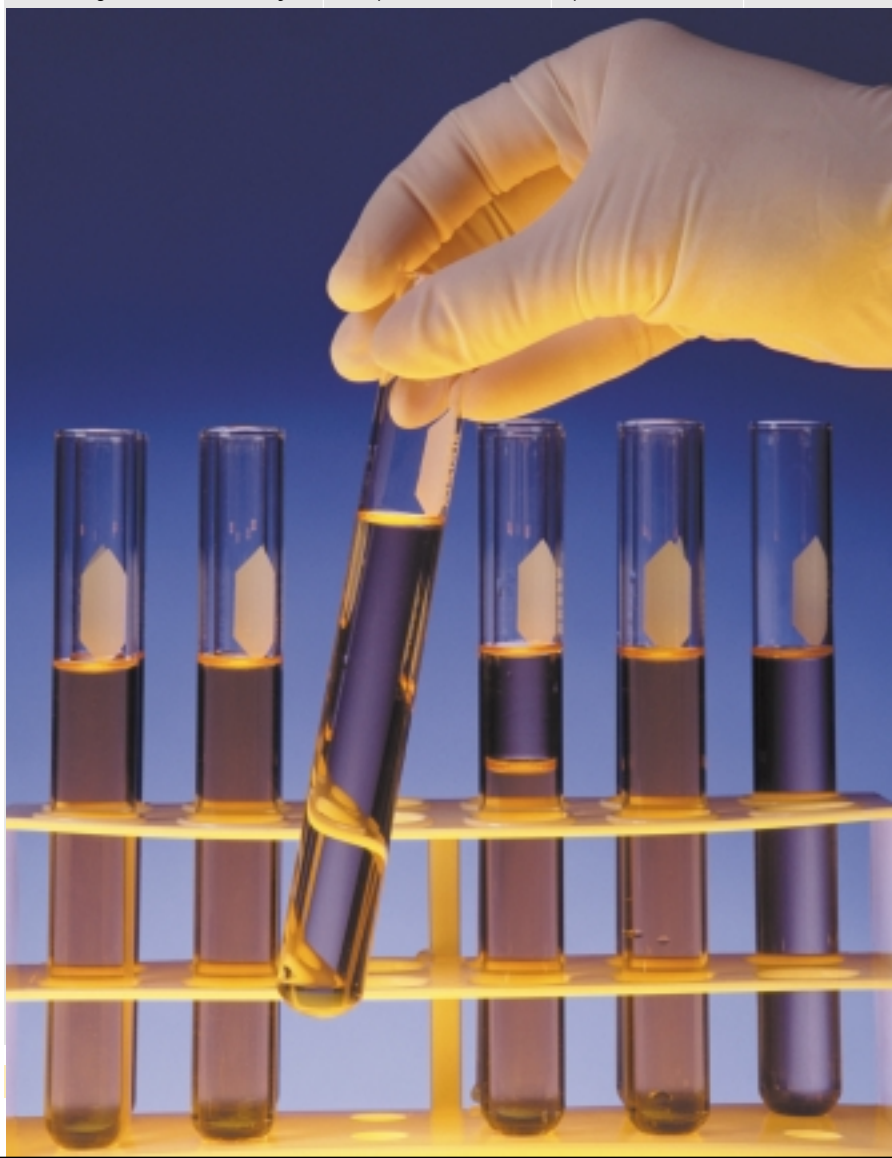
ISO 9001
ISO 13488

CE for most products available.

AXIOM US INC.
9300 N.W. 58 Street, Suite #207
Miami, Florida 33178
Tel.: 1-(305) 513-8998 · Fax: 1-(305) 513-8998
E-Mail: MMSUSINC@AOL.com
<http://www.AXIOM-ONLINE.NET>

* = Store at 2°- 8°	Wavelength nm	Packsize	Ref. No.
ENZYMES			
Acid Phosphatase*	Hg 405	100 ml	88 70 01
Alk. Phosphatase*	Hg 405	240 ml	88 54 27
α - Alpha-Amylase Direct* (colortest enzymatic)	Hg 405 (400-420)	200 ml	88 01 03
CK-NAC Activated* (opt. UV-test)	Hg 334 (340-365)	60 ml	88 01 01
CK-MB (NAC-act)* (UV-Method - Control Serum)	Hg 334 (340-365)	60 ml	88 09 21
γ - GT fluid* (Glutamyltransferase)	Hg 405 (400-420)	240 ml	88 56 66
LDH fluid*	Hg 365 (334-340)	240 ml 600 ml	88 51 50 88 73 19
Cholinesterase* with Dibucain	Hg 405 (420-440)	240 ml	88 36 01
GOT/ASAT fluid* (IFFC)	Hg 334 Hg 365 (340)	240 ml 600 ml	88 58 99 88 28 62
GOT/ALAT fluid* (IFFC)	Hg 334 Hg 365 (340)	240 ml 600 ml	88 36 15 88 13 35
Lipase UV fluid*	Hg 334 Hg 365 (340)	100 ml	88 98 73
Lactate PAP* (Colorimetric)	Hg 546	200 ml 5 ml Standard	88 06 91 88 06 92
α - HBDH	Hg 546	240 ml	88 00 00

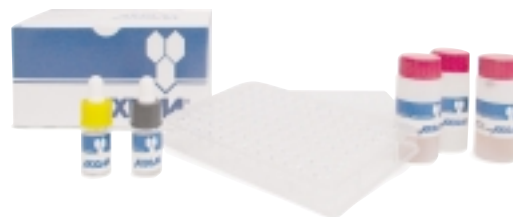
For configuration and stability at 2-8°C please refer to the respective method sheet.



CLINICAL CHEMISTRY

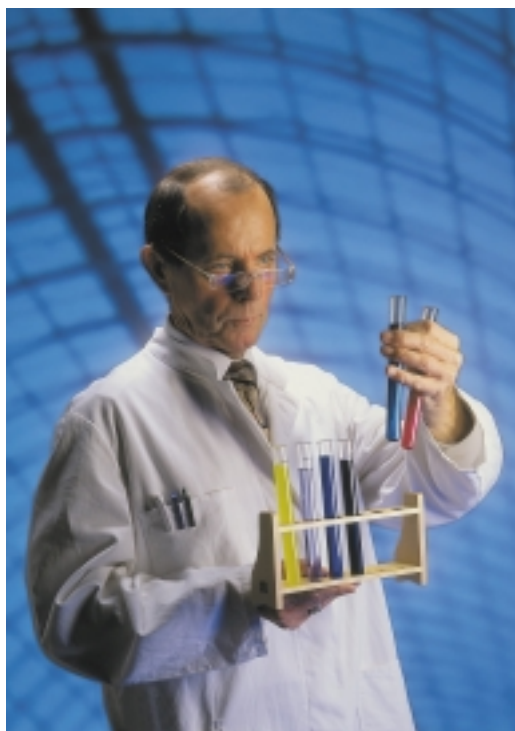
(special packsizes upon request)

High Quality CLINICAL CHEMISTRY
from AXIOM for Manuel and
Automated use.
With long shelflife and long stability
after preparation.



CLINICAL CHEMISTRY

(special packsizes upon request)



* = Store at 2°- 8°	Wavelength nm	Packsize	Ref. No.
LIPIDS			
Cholesterol fluid* (Enzym. CHOD-PAP)	Hg 500 (546)	200 ml 600 ml 5 ml Standard	88 07 99 88 85 02 88 08 91
HDL Cholesterol* (Dextran sulphate-Mg(II) method)	Hg 546	100 ml	88 38 85
LDL Cholesterol* (CHOD-PAP method)	Hg 546	100 ml	88 06 10
Triglycerides-fluid* (GPO enzym. color)	Hg 500 (546)	200 ml 500 ml 5 ml Standard	88 39 76 88 12 41 88 62 72
IONS			
Ammonium fluid*	Hg 340 (334/365)	72 ml 5 ml Standard	88 09 27 88 09 18
Copper fluid*	Hg 580	100 ml 5 ml Standard	88 11 20 88 11 21
Calcium fluid* (o-Cresolphthalein Direct Method)	Hg 578 (565)	200 ml 5 ml Standard	88 59 36 88 71 97
Chloride fluid (Thiocyanate method)	Hg 492 (480-550)	200 ml 5 ml Standard	88 72 72 88 19 21
Inorganic Phosphorus UV fluid*	Hg 334/340	500 ml 5 ml Standard	88 44 17 88 57 70
Iron fluid* (Ferene-S)	Hg 578	240 ml 5 ml Standard	88 18 92 88 43 87
TIBC*	Hg 578	100 ml	88 14 62
Magnesium fluid* (Xylidylblue)	Hg 546	200 ml 5 ml Standard	88 29 85 88 06 40
Potassium fluid* (TPB-method)	Hg 578	100 ml 5 ml Standard	88 11 11 88 98 14
Sodium fluid* (Magnesium-Uranylacetate)	Hg 365/405	200 ml 5 ml Standard	88 99 37 88 99 38

For configuration and stability at 2-8°C please refer to the respective method sheet.



* = Store at 2°- 8°	Wavelength nm	Packsize	Ref. No.
PROTEINS			
Albumin* (BCG method)	Hg 578	1000 ml 5 ml Standard	88 72 83 88 08 35
CSF-Protein fluid* (Coomassie blue)	Hg 578/623	100 ml 5 ml Standard	88 21 16 88 22 09
Microprotein fluid*	Hg 600	100 ml 5 ml Standard	88 21 17 88 21 18
Hemoglobin* (concentrated Cyanmethemoglobin)	Hg 546 (540)	100 ml conc. for 1 liter	88 60 23
Protein Total fluid* (Direct Biuret method)	Hg 546 (540)	1000 ml 5 ml Standard	88 71 71 88 08 36



OTHER METABOLITES

Bilirubin T/D* (DMSO-method)	Hg 546	50 tests 100 tests	88 20 93 88 20 83
Creatinine fluid* (Modified Jaffé kinetic without Deproteinisation)	Hg 492 (500/509)	200 ml 5 ml Standard	88 88 91 88 83 98
Glucose GOD-PAP fluid* (enzym. Colorimetric test)	Hg 546 (510)	200 ml 4 x 250 ml 1000 ml 5 ml Standard	88 15 89 88 00 92 88 99 41 88 99 40
Glucose Hexokinase fluid* (without Deproteinisation)	Hg 334/340/365	240 ml 5 ml Standard	88 00 95 88 00 96
Urea Enzymatic fluid* (Modified Berthelot-method)	Hg 546	200 ml 5 ml Standard	88 36 48 88 02 68
Urea UV fluid*	Hg 334 (340)	240 ml 600 ml 5 ml Standard	88 13 05 88 28 31 88 13 60
Uric Acid PAP fluid* (Mono Dry-Powder)	Hg 546 (340)	240 ml 600 ml 5 ml Standard	88 07 96 88 03 06 88 13 30

QUALITY CONTROLS

Control Serum N*	(Bovine)	6 X 5 ml	88 41 48 B
Control Serum P*	(Bovine)	6 x 5 ml	88 46 85 B

For configuration and stability at 2-8°C please refer to the respective method sheet.

CLINICAL CHEMISTRY

(special packsizes upon request)

High Quality CLINICAL CHEMISTRY
from AXIOM for Manuel and
Automated Use.
With long shelflife and long stability
after preparation.

CLINICAL CHEMISTRY INSTRUMENTS



EOS BRAVO FORTE Automatic Analyzer
 Random access, high speed fully automatic clinical chemistry analyzer. Intelligent multitasking software, automatic calibration, bar coding, innovative cuvettes washing station. The photometric throughput is 300 tests/hour; up to 420 test/hour with integrated ISE module (optional). Concentric sample and refrigerated disks compact and speed up the system.

EOS BRAVO FORTE Automatic Analyzer

SPECIFICATION:

OPERATIVE MODE:	Innovative 3-plate coaxial structure; Random, Batch, STAT, Profile.
TROUGHPUT:	300 tests per hour, up to 420 tests with ISE unit (optional).
SAMPLE SYSTEM:	59 sample plate positions; internal barcode reading; sample volume from 3 to 40
REAGENT SYSTEM:	35 reagent position (mono or bi-reagent); refrigerated reagent plate compartment (Peltier elements), preheated reagent needle with integrated level sensor, internal barcode reading, reagent consumption from 350 Kl per test.
SAMPLE PRE-DILUTION:	Pre-programmable dilution rati, post-dilution ratio for pathological samples.
CUVETTE SYSTEM:	60 positions reaction plate, semi-disposable cuvettes, optical path 7 mm, measuring temperature 25, 30, 37°C, hydraulic heating system controlled by Peltier elements, minimum test volume 350 6 l.
WASHING STATION:	8 needle cuvette washer, 1 piston pump cuvette drier, water consumption 500 ml/hour, automatic cuvette check before re-use.
WAVELENGTH RANGE:	8 position filter wheel, automatic filter selection (340,405,492,505,546,578,630,700), other wavelength available on request
PHOTOMETRIC RANGE:	Linearity from 0 to 2.5 O.D., photometric sensibility 0.001 A.
ANALYTICAL MODES:	Kinetics, end point (bichromatism option), fixed time, multistandard, graphical plot for all measurements, calculated mode.
QUALITY CONTROL:	Different controls can be defined for each test, Levey-Jennings graph, Westgards rules.
BAR CODE READER:	Code 128, codebar, code 2 of 5.
ISE UNIT (optional):	Na, K and CL measurements.
SYSTEM INTERFACE:	RS 232 serial interface bi-directional for remote access.
LANGUAGES:	Multilanguage capability.
PRINTER:	Any standard PC printer can be connected.
ENVIRONMENT:	Working temperature from 18 to 35°C, relative humidity from 10 to 90%.
POWER SUPPLY:	110/220 V, 1Kw max.
DIMENSIONS (FLOORSTANDING):	(W)70 x (D)65 x (H)120; WEIGHT: 85 Kg.
DIMENSIONS (BENCH):	(W)70 x (D)65 x (H)51; WEIGHT: 50 Kg



EOS BRAVO PLUS
 Automatic clinical chemistry analyzer, with 240 test/hour productivity. Double cuvettes real time multiasking operating system. Completely open instrument that minimizes working time optimizing the analytical phases. 18 refrigerated positions for reagents and 64 for samples, standard and controls. 32 methods on line.

EOS BRAVO PLUS

SPECIFICATION:

OPTICAL GROUP:	Long life halogen lamp Precision interferential filters low band +/- 2 nm 340-405-492-510-546-578-620-700 nm + 2 free Reading accuracy +/- 1 % Noise: less than +/- 2 mA at 340 nm 3.000 mA
DILUTER	Precision syringe 1000 µL. egulation: 1 µL step. Accuracy: +/- 0,5 %
INCUBATOR	Incubation temperature: 37 ° +/- 0,1° C
DIMENSIONS	71 x 62 x 36 cm
WEIGHT	38 Kg

CHEM 5 PLUS

FEATURES:

- Versatile analytical options such as Endpoint (Linear & non-linear), kinetic & fixed time, in monochromatic and bi-chromatic modes.
- Displays , prints, and memorises graphs of all linear and non-linear reactions.
- Most economic system using only 200-500 micro liter reagent per test.
- 128 totally open test programmes directly selectable through keyboard.
- Built-in self-diagnosis ensures simple and safe maintenance.
- User-friendly software guides the operator step by step.
- Large 8 line liquid crystal video display.
- Unique triple cuvette system.
- Unique plug-in memory chip for future up-dating and expansion.

SPECIFICATION:

OPTICS :	Most advanced static photometer with 8 filters (340, 380, 405, 510, 546, 578, 630 nano-meter).
READING VOLUME :	Minimum 200 micro-liters.
PRINTER:	40 column, silent, full graphics thermal printer that prints all types of graphs and curves with ON/OFF control.
INTERFACE :	AXIOM CHEM-5 PLUS comes with RS 232 port and can be interfaced to any IBM-compatible Computer.
LIGHT SOURCE:	A powerful long life quartz halogen lamp.
CUVETTE :	Unique Triple cuvette system with Peltier Electronics Temp. control (25, 300, 37 degrees celsius) <ol style="list-style-type: none"> 1. 33 micro-liters Flow cell cuvette, 2. Manual Square Cuvette, 3. Manual Round Tube for coagulation and Elisa.
SIZE :	250 millimeter (H) x 500 millimeter (L) X 350 millimeter (D), 15 Kgs.
POWER :	70 W, 230v/110V +/- 10% 50 Hz.
PHOTOMETRIC PRECISION:	Better than 1% CV.
KEYBOARD :	Rugged , water proof, 24 key membrane panel.
PHOTOMETRIC RANGE :	0 -2,5 O.D.
ZERO:	Automatically set.
CALIBRATION :	Automatic against standard.
COMPUTER :	Latest Microprocessor with battery back-up for permanent storage of Test parameters, Reagent Blanks, Q.C. , Values & Calibration curves for each of 128 test.

CLINICAL CHEMISTRY INSTRUMENTS

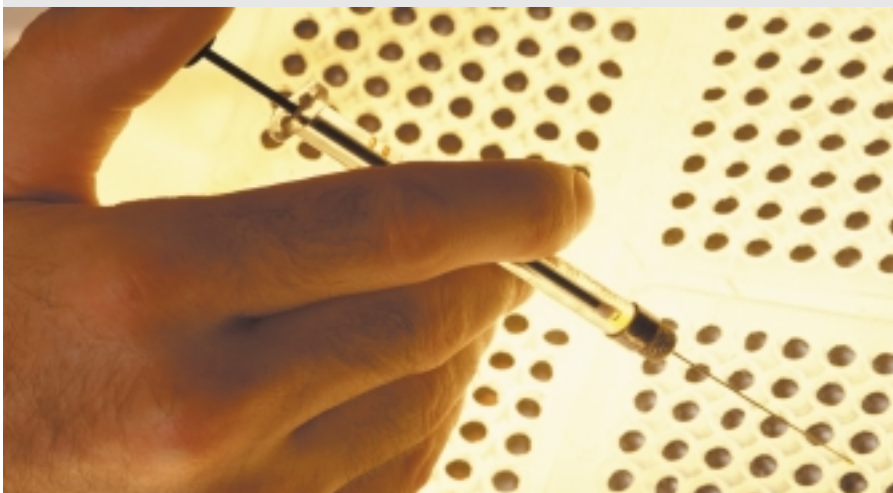


CHEM 5 PLUS
Sophisticated Semi-Automatic Analyzer for All Routine Chemistries, Electrolytes, Immunoassays, Hormones, Coagulation and Drug Tests

LAB MASTER

SPECIFICATION:

OPTICAL GROUP:	6 interferential filters: 340, 405, 546, 578, 640 nm + 2 free filter positions
PHOTOMETRIC RANGE:	0 - 2.5 O.D.
CUVETTE SYSTEM:	Microflow Cell: 32 µL, 10 mm light path interchangeable against microflow cell with 80 mL, standard cuvettes
TEMPERATURE CONTROL:	Peltier elements, 25° C, 30° C and 37° C
REACTION VOLUME:	500 µL per test Printer graphic; 21 characters per line
POWER SUPPLY:	220 V a.c.; 50 Hz - 110 V; 60 Hz
DIMENSIONS:	33 (L) x 34 (H) x 18 (H) cm
WEIGHT:	8.5 kg



SCREEN MASTER LAB
Semi-Automatic Analyser with powerful features in compact unit for biochemical investigations, enzymes, immunoturbidimetrics and drugs.

The LabMaster performs end-point, Kinetics, Fixed-time and Multistandards assays and is easy to use with step-by step procedure.

CLINICAL CHEMISTRY INSTRUMENTS

ELECTROLYTE ANALYZER BT-500

SPECIFICATION:

SAMPLES: Serum, Blood, whole blood, diluted urine

RANGE AND PRECISION:

	RANGE	CV
K+	0.5-150mmol/L	≤1.0%
Na+	50-200mmol/L	≤1.0%
Cl-	50-200mmol/L	≤1.0%
Ca2+	0.5-5.0mmol/L	≤1.5%
pH	6-9mmol/L	≤1.0%

WORKING ENVOIREMENT:

TEMEPERATURE: 0-40° C

MAXIMUM RELATIVE HUMIDITY: 85%

MEASUREMENT: 455x330x740

WEIGHT: Approximately 7.5 kg

ANALYSIS SPEED: 45s (Sample aspirating & rinsing and printout included)

ANALYSIS PRINCIPLE: Ion selective electrodes

CALIBRATION: Calibrate automatically and manually

SAMPLING: Syringe, tube, capillary

SAMPLE VOLUME: 110 µl

Built-in TP-24 Printer, LCD Display

DATA STORAGE: 300 samples, 30 controls

BENCH TOP: easy to handle

Operation without standing by

No need to turn off unit

Convenient access to emergency tests



ELECTROLYTE ANALYZER BT-500

The BT-500 is a reliable, computer controlled analyzer with Ion-selective Electrode Electrolyte. It features easy maintenance and operation, comprehensive software and automatic storage of results in case of power failures.



SCREEN-LYTE

SPECIFICATION:

RANGE:

Na 0:250 mEq/L

K 0:10 mEq/L or 0:250 mEq/L

Li 0:2,5 mEq/L

WAVELENGTH:

Na 589 nm

K 766 nm

Li 671 nm

SAMPLE VOLUME:

10 K L

FILTERS:

3 interferences filters 589, 670 and 767 nm

POWER SUPPLY:

220V a.c.; 50Hz (110V a.c. ; 60Hz)

DIMENSIONS:

30,5 (L) x 31,5 (H) x 31,5 (H) cm

WEIGHT:

12 Kg net.

INTERFACE:

RS 232

SCREEN-LYTE

flame Photometer for Na, K and Li determination

- Internal standard principles
 - Full programmable and safety controlled
 - Built-in diluter and thermal printer
 - To be used with commercial propane
 - Easy to use and to prepare the samples
 - Equipped with Q.C. programme
- Results appear on the display and are printed out together with the ID number and all indications the user may need for checking that the test has been done correctly.

BILIRUBINOMETER NEO BIL

SPECIFICATION:

SYSTEM OF MEASURE:	photometric
SERUM READING:	at unique point on the capillary
ZERO:	completely automatic
CORRECTION OF INTERFERENCE:	automativ subtraction of haemoglobin
TIME OF RESPONSE:	1 sec. approx. even in samples with much interference
ERROR:	2% max
DETECTORS:	silicon photodiodes
FILTERS:	interferentials
ELECTRONIC SYSTEM:	microcontroller Intel
PROGRAMMING SYSTEM:	by membrane keyboard
PRESENTATION OF DATA:	on display and in print
STORAGE OF DATA:	100 plus results with back-up battery
DATA OUTPUT:	RS 232
PARTICULAR FUNCTIONS:	Incorporated calender and timer
DIMENSIONS:	32x26x12 cm
COMPUTER :	Latest Microprocessor with battery back-up for permanent storage of Test parameters, Reagent Blanks, Q.C., Values & Calibration curves for each of 128 test.



CLINICAL CHEMISTRY INSTRUMENTS

NEO BIL

Neo Bil is a sophisticated and innovative version of bilirubinometers, which analyze the "total bilirubin" through a microcapillary in order to follow the icterus course of the new born.

More than 10 years of experience, both in this specific field and in the field of physics-chemistry have led us to this achievement. Thanks to the use of the most recent techniques and technology there is no need for frequent adjustments and continuous standard resetting.

A precise sample reading of both bilirubin and interferentials at the same point on the capillary is carried out by its special reading system. It is also possible to perform a reading when there is only a small quantity of serum.

The NEO BIL is equipped with an internal printer which facilitates sequential printing of the results.

HB ANALYZER HAEMOGLOBINOMETER OM-181

SPECIFICATION:

INTENDED USE:	measurement of haemoglobin
SAMPLE:	whole blood with anticoagulant
READING CUVETTE:	10 mm optical path
MINIMUM VOLUME:	0,9 ml
MEASURE UNIT:	g/l, g/dl, or mmol/l (selectable)
READING RANGE:	from 0.000 to 3.000 OD
ZERO AND CHECKS:	completely automated
READING TIME:	~ 3s
READING ERROR:	5% max.
MEASUREMENT SYSTEM:	photometric
DETECTOR:	silicon photodiode
OPTICAL FILTER:	540 nm
BAND WIDTH:	10 nm
PROGRAMMING:	by built in keypad
RESULTS:	on LCD display and printer
MEMORY CAPABILITY:	more than 500 results
DATA OUTPUT:	RS232
OTHER FUNCTIONS:	incorporated calendar and timer
OPERATING:	temperature 15 - 35° C
CONDITIONS:	relative humidity < 80%
DIMENSIONS:	cm 32 x 26 x 12
WEIGHT:	4 Kg
POWER REQUIREMENTS:	230/115 Vac, 50-60 HZ



HB ANALYZER HAEMOGLOBINOMETER OM-181

The Haemoglobinometer OM-181 is an instrument for fast and accurate determination of haemoglobin using the cyan-metahaemoglobin method. The direct reading, expressed in concentration (g/l, g/dl, mmol/l), is at once displayed. The instrument automatically performs the zero (autozero). The instrument has been conceived taking in account of the precision, reliability and quick response.

RAPID TESTING

* = Store at 2°- 8°	Packsize	Ref. No.
FEBRILE SERODIAGNOSTIC		
B. Screening Bengale Rose	100 tests	88 12 43
B. Abortus	5 ml	88 02 89
B. Melitensis	5 ml	88 09 89
S. Typhi H(d-H)	5 ml	88 03 89
S. Typhi O (9, 12-O)	5 ml	88 07 91
S. Parathyphi AH (a-H)	5 ml	88 07 97
S. Parathyphi AO (1,2,12-O)	5 ml	88 07 98
S. Parathyphi BH (b-H)	5 ml	88 08 83
S. Parathyphi BO (1,4,5,12-O)	5 ml	88 08 84
S. Parathyphi CH (c-H)	5 ml	88 08 85
S. Parathyphi CO (6,7- O)	5 ml	88 08 86
Proteus OX19	5 ml	88 10 67
Proteus OX2	5 ml	88 10 68
Proteus OXK	5 ml	88 10 69
Polivalent Positiv Control (Salmonella)	1 ml	88 12 98
Polivalent Positiv Control (Brucella/ Proteus)	1 ml	88 08 87
Polivalent Negativ Control	1 ml	88 16 52



Also Available (please ask for separate Catalog)

- 1) *Bacteriological Test Reagents/Test Sera and Test Antigens*
 - Salmonella Diagnosis
 - Test Reagents, Test Sera and Enteroclons
 - Test Antigens and Control Sera
 - Shigella Diagnosis
 - Yersinia Diagnosis
 - Coli Diagnosis
- 2) *Dehydrated Culture Media, Supplements and Ready-to-use Culture Media*
- 3) *Allergy Tests*

* = Store at 2°- 8°

Packsize Ref. No.

LATEX TESTS

Rapid ASO Latex Direct*	50 tests	88 27 15
	100 tests	88 17 98
	150 tests	88 10 50
Rapid CRP Latex Direct*	50 tests	88 31 37
	100 tests	88 18 97
	150 tests	88 10 60
Rapid RF Latex Direct*	50 tests	88 45 21
	100 tests	88 24 14
	150 tests	88 10 70
LE - (Anti DNA)*	50 tests	88 47 62
Pregnancy Test Direct, Latex (Monoclonal 0,2 IU)	50 tests	88 23 81
	100 tests	88 94 86
	150 tests	88 99 12
Pregnancy Test Indirect, Latex (Monoclonal 0,2 IU)	50 tests	88 16 53
	100 tests	88 16 50
	150 tests	88 94 85

OTHER AGGLUTINATION OR SLIDE TESTS

RPR-Carbon*	100 tests	88 17 97
	500 tests	88 24 05
	500 tests	88 20 31
TPHA-Syphilis (Passive haemagglutination test)	200 tests	88 92 83
PHA-Syphilis* (Passive haemagglutination test)	200 tests	88 92 83
Waler Rose* (Passive haemagglutination test)	50 tests	88 03 10
	100 tests	88 03 15
Infectious Mononucleosis* (Haemagglutination slide test)	100 tests	88 15 15
Occult Blood	100 tests	88 03 06

PREGNANCY TESTS

HCG urine/serum Device	25 tests	88 99 47
HCG urine Device	25 tests	88 99 46
HCG urine/serum Strip single pouched	50 tests	88 99 48
HCG urine Strip single pouched	50 tests	88 99 50
HCG urine/serum strip tube	40 tests	88 99 52
HCG urine strip tube	40 tests	88 99 45
LH Ovulation card	25 tests	88 99 49
LH Ovulation strip	50 tests	88 99 49s
HCG Midstream test	25 tests	88 11 80

INFECTIOUS DISEASES

Stripe formate

HBsAG Strip	50 tests	88 99 44
HBsAb Strip	50 tests	88 03 03
HBeAg Strip	50 tests	88 99 53
HBeAb Strip	50 tests	88 99 54
HBcAb Strip	50 tests	88 99 55

Double spot formate

HIV 1&2	100 tests	88 99 43
	25 tests	88 99 42
HCV	25 tests	88 99 51
H Pylori IgG	25 tests	88 03 05
Leishmania	25 tests	88 03 07
Chagas	25 tests	88 03 08
Toxoplasma IgM	25 tests	88 03 01
Syphilis	25 tests	88 03 11

Card formate

HIV 1&2	25 tests	88 99 56
HCV	25 tests	88 99 57
HBsAg	25 tests	88 03 02
Gonorrhea	25 tests	88 88 99
Chlamydia	25 tests	88 99 99

DRUGS OF ABUSE - CARD (strip formate available on request)

5 Multiscreen Drug Test*	25 tests	88 98 88
Amphetamine	25 tests	88 98 75
Methamphetamine	25 tests	88 98 76
THC/Marijuana	25 tests	88 98 65
Cocaine	25 tests	88 98 70
Benzodiazepines	25 tests	88 98 85
Morphine/Opiates/Heroin	25 tests	88 98 60
Barbiturate	25 tests	88 98 61

*Parameters to be selected

RAPID TESTING



RAPID TESTING

* = Store at 2°- 8°	Packsizes	Ref. No.
TEST STRIPES		
AXIOM 10' (with Specific Gravity and Leucocytes)	100 tests	88 02 90
AXIOM 9' (with Specific Gravity)	50 tests 100 tests	88 02 91 88 02 92
AXIOM 5'	50 tests 100 tests	88 02 93 88 02 94
AXIOM 3'	50 tests 100 tests	88 02 95 88 02 96
AXIOM Glucose Single	50 tests 100 tests	88 02 97 88 02 98
AXIOM Ketone Single	50 tests 100 tests	88 02 99 88 03 00

* Other parameters of Urine Strips are available upon request



MASTER STRIP READER

The user friendly and reliable reader for our Axiom 10' 10 parameter urine strips

- User friendly, reliable test strip reader
- Easy cleaning & maintenance
- Low maintenance cost

STRIP MASTER strip reader

SPECIFICATION:

- Automatic calibration
- Detecting wave length range 470-610 nm
- RS 232 and keyboard port for connection to computers and bar code readers
- built-in thermal printer
- LCD display
- memory: storage of 500 analysis results

*Leucocytes, Nitrite, Urobilinogen, Protein, pH, Blood, Specific Gravity, Ketone, Bilirubin, Glucose

TECHNICAL DATA:

- reflectance meter principle with 3 pairs LEDs and 1 photodiode
- Wavelengths 470, 525 and 610 nm
- built-in thermal printer
- interfaces for computer and bar code reader connection
- LCD display
- 360 measurements per hour in fast mode, 30 in normal mode
- Convenient access to emergency tests



HEMA-SCREEN 18

Automatic cell counter for the simultaneous determination of 18 parameters with screening of the leukocytic formula in percentage and absolute values.

The HEMASCREEN 18 simultaneously determines 18 hematological parameters including 3-part leukocyte differentials in percentage and absolute values. WBC, RBC, and PLT histograms with automatically calculated threshold are displayed in color. Histograms are optionally printed with the report or separately.

Impressive alert system comprised of biological and mechanical flags, alarms and warnings for pathological results, including auto-diagnostic capabilities.

A color TOUCH-SCREEN display allows for fast and direct menu selections. Combined with the Hemascreen's Microsoft-Windows-based software, instrument operation is virtually intuitive from the very beginning.

COUNTING TIME:	9 sec.
WORKING CAPACITY:	60 samples/hour
SAMPLE VOLUME:	25 µl of whole blood
APERTURE SIZE:	72µm/RBC-PLT and 100µm/WBC
ACCURACY:	WBC 3%, RBC: 2%, HCT: 3%, MCV: 2%, HGB: 2%, PLT: 4%
PARAMETERS:	-WBC-LYM#-MID#- GRN#LYM%-GRN%- HGB-RBC-HCT-MCV- RDW-MCH-MCHC- PLT-MPV-PCT-PDW- WBC, RBC and PLT histograms
INTERFACE:	RS232
SCREEN:	600x800 LCD color display
PRINTER:	external
POWER SUPPLY:	110/220 V; 50/60 Hz; 900 VA
SIZE:	50x40x46 cm
WEIGHT:	29 kg

HEMA-SCREEN 13

Semiautomatic cell counter, double capillary, for the simultaneous determination of 13 hematological parameters:

WBC - RBC - Hgb - HcT - MCV - MCH - MCHC - PCT-PIT. MPV - Pct - RDW - PDW - LY%

Histograms of WBC-RBC-PIT are displayed and printed. Built-in diluter and printer. Veterinary software.

REAGENTS (Hema-Screen 18 only)

Ref.-No.:

70010070	Differential isotonic solution
70010075	Differential lysing solution
70010085	Detectoterge solution
70010028	Hematology Control 16p (3N)
70010026	Hematology Control 16p (4N, 1L, 1H)

HEMA-SCREEN 10

Semiautomatic cell counter for the determination of the following parameters:

WBC-RBC - Hgb -HcT - MCV - MCH - MCHC- MPV - PCT - PIT

ORIFICE DIAMETER:	72 micrometers for WBC, RBC and Plt
READING TIME:	less than 30"
SAMPLE VOLUME:	20 µl of whole blood
DILUTION RATIO:	RBC and PLT: 1:50.000, WBC 1:500
ASPIRATION VOLUME:	250 µl for RBC, WBC, Plt, 1500 µl for Hgb
ACCURACY:	WBC CV <2% (X=10.2x10 ³ /µl) RBC CV <1.5% (X=4.65x10 ⁶ /µl) Hgb CV <1.2% (X=13.2x10 ⁶ /µl) Plt CV <5% (X=250x10 ³ /µl) MCV CV <1% (X=87µ ³)
REPEATABILITY:	RBC and Hgb CV <1.5- WBC and Hct CV=2-Plt CV=3.5
POWER SUPPLY:	220 V A.C.; 50 HZ - 110 V.A.C.; 60 Hz
SIZE:	36x40x42 cm
WEIGHT:	15 kg

HEMA-SCREEN 7

Semiautomatic cell counter for the determination of the 7 parameters:

ORIFICE DIAMETER:	110 micrometers for WBC, RBC
READING TIME:	less than 30"
SAMPLE VOLUME:	20 µl of whole blood
DILUTION RATIO:	RBC 1:50.000, WBC 1:500
ASPIRATION VOLUME:	250 µl for RBC, WBC, 1500 µl for Hgb
ACCURACY:	WBC CV <2% (X=10.2x10 ³ /µl) RBC CV <1.5% (X=4.65x10 ⁶ /µl) Hgb CV <1.2% (X=13.2x10 ⁶ /µl) MCV CV <1% (X=87µ ³)
REPEATABILITY:	RBC and Hgb CV <1.5- WBC and Hct CV=2
POWER SUPPLY:	220 V A.C.; 50 HZ - 110 V.A.C.; 60 Hz
SIZE:	36x40x42 cm
WEIGHT:	15 kg

REAGENTS (Hema-Screen 7, 10, 13)	
Ref.-No.:	
70010011	Isotonic solution in Cubitainer
70010030	Lysing solution
70010020	Detergent solution
70010025	Detergent solution
70010027	Hematology Control 10 p.(3N)
70010029	Hematology Control 10 p. (4N, 1L, 1H)

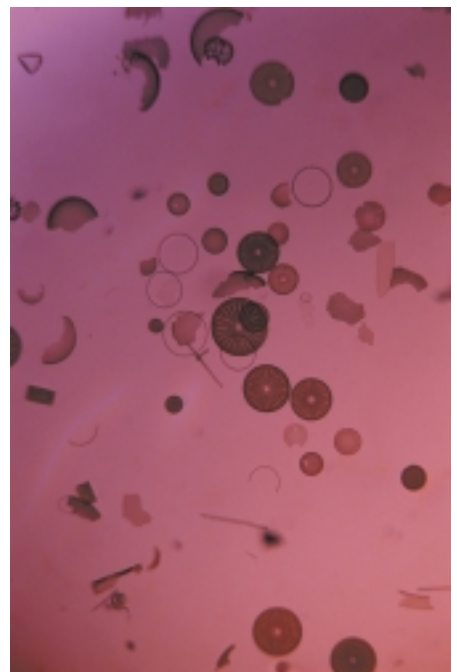
HAEMATOLOGY



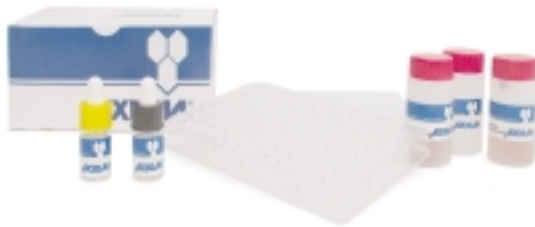
Hema-Screen 18

Axiom's Hemascreen series of semi-automatic and automatic hematology analyzers for 7 to 18 parameters for small and medium laboratories.

Choose from Analyzers for 18, 13, 10 or 7 parameters.



MICROWELL ELISA SYSTEMS



Also available on request:

Adenovirus AG
Adenovirus IgA
Adenovirus IgM
Adenovirus IgG
Bordetella pert. IgA
Bordetella pert. IgG
Bordetella pert. IgM
Borrelia burgd. IgG
Borrelia burgd. IgM
Chlamydia tracho. AG
Chlamydia tracho. IgA
Chlamydia tracho. IgM
Chlamydia tracho. IgG
Corynebac dipht tox IgG
Cryptosporidium AG
Echinococcus IgG
Entamoeba histo IgG
Entamoeba histoly. AG
Epstein Barr virus IgG
Epstein Barr virus IgM
Free T-3
Free T-4
Giardia lamblia AG
Influenza vir. A IgA
Influenza vir. A IgG
Influenza vir. A IgM
Influenza vir. B IgA
Influenza vir. B IgG
Influenza vir. B IgM
Leishmania IgG
Measles virus IgG
Measles virus IgM
Mumps virus IgG
Mumps virus IgM
Mycopl. pneu IgG
Mycopl. pneu IgM
Respira. syn. vir. AG
Respira. syn. vir. IgA
Respira. syn. vir. IgG
Respira. syn. vir. IgM
Rotavirus AG
Schisto. mansoni IgG
Tick-borne enceph. virus IgG
Tick-borne enceph. virus IgM
Toxocara canis IgG/IgM
Taenia solium IgG
Tetanus toxin IgG
Treponema pallidum IgG/IgM
Trichinella spiralis IgG
Varizella-Zoster virus IgA
Varizella-Zoster virus IgG
Varizella-Zoster virus IgM

* = Store at 2° - 8°	Wavelength nm	Packsize	Ref. No.
HUMAN HORMONES			
Prolactin Quantitative*	450 nm	1 x 96 wells	88 98 00
FSH Quantitative*	450 nm	1 x 96 wells	88 98 10
LH Quantitative*	450 nm	1 x 96 wells	88 98 15
hCG Quantitative*	450 nm	1 x 96 wells	88 98 25
Ferritin Quantitative*	450 nm	1 x 96 wells	88 98 30
IgE Quantitative*	450 nm	1 x 96 wells	88 98 40
HGH Test Quantitative*	450 nm	1 x 96 wells	88 98 45
Estradiol	450 nm	1 x 96 wells	88 14 76
Testosterone	450 nm	1 x 96 wells	88 14 77
Progesterone	450 nm	1 x 96 wells	88 14 78
Cortisol	450 nm	1 x 96 wells	88 14 79
THYROID TEST PANEL			
T 3 Quantitative	450 nm	1 x 96 wells	88 14 50
Free T3	450 nm	1 x 96 wells	88 14 51
T 4 Quantitative	450 nm	1 x 96 wells	88 15 00
Free T4	450 nm	1 x 96 wells	88 14 01
TSH	450 nm	1 x 96 wells	88 98 35
HUMAN CANCER MARKERS			
AFP Quantitative	450 nm	1 x 96 wells	88 98 50
CEA Quantitative	450 nm	1 x 96 wells	88 98 55
PSA Quantitative	450 nm	1 x 96 wells	88 98 56
PAP Quantitative	450 nm	1 x 96 wells	88 98 57
CP-2 Quantitative	450 nm	1 x 96 wells	88 98 51
CP-4 Quantitative	450 nm	1 x 96 wells	88 98 52
TORCH PANEL			
Toxo IgG	450 nm	1 x 96 wells	88 14 25
Toxo IgM	450 nm	1 x 96 wells	88 14 26
Rubella IgG	450 nm	1 x 96 wells	88 14 32
Rubella IgM	450 nm	1 x 96 wells	88 14 33
CMV IgG	450 nm	1 x 96 wells	88 14 10
CMV IgM	450 nm	1 x 96 wells	88 14 11
HSV I IgG	450 nm	1 x 96 wells	88 14 14
HSV I IgM	450 nm	1 x 96 wells	88 14 16
HSV II IgG	450 nm	1 x 96 wells	88 14 15
HSV II IgM	450 nm	1 x 96 wells	88 14 17
HSV I/II IgG	450 nm	1 x 96 wells	88 14 18
HSV I/II IgM	450 nm	1 x 96 wells	88 14 09
AUTOIMMUNE DISEASE PANEL			
ANA Screening	450 nm	1 x 96 wells	88 99 64
ENA Screening	450 nm	1 x 96 wells	88 99 65
Anti ds DNA	450 nm	1 x 96 wells	88 99 66
Anti SS DNA	450 nm	1 x 96 wells	88 99 67
Anti SSA	450 nm	1 x 96 wells	88 99 68
Anti SSB	450 nm	1 x 96 wells	88 99 69
Anti Sm	450 nm	1 x 96 wells	88 99 70
Anti Sm RNP	450 nm	1 x 96 wells	88 99 71
Anti Scl 70	450 nm	1 x 96 wells	88 99 72
RF IgM	450 nm	1 x 96 wells	88 99 73
CRP	450 nm	1 x 96 wells	88 99 74
HEPATITIS + INFECTIOUS DISEASES PANEL			
HBsAG - EIA	450 nm	1 x 96 wells	88 03 18
HBsAb - EIA	450 nm	1 x 96 wells	88 03 19
HBcAb - EIA	450 nm	1 x 96 wells	88 03 20
HBeAg - EIA	450 nm	1 x 96 wells	88 14 05
HBeAb - EIA	450 nm	1 x 96 wells	88 03 22
HAV IgG Ab - EIA	450 nm	1 x 96 wells	88 03 24
HAV IgM Ab - EIA	450 nm	1 x 96 wells	88 03 25
HCV Ab - EIA	450 nm	1 x 96 wells	88 03 26
HIV 1&2 Ab - EIA	450 nm	1 x 96 wells	88 00 07
H. Pylori IgG Ab - EIA	450 nm	1 x 96 wells	88 14 08
H. Pylori IgM Ab - EIA	450 nm	1 x 96 wells	88 14 07
H. Pylori IgA Ab - EIA	450 nm	1 x 96 wells	88 14 06
Brucella IgG Ab - EIA	450 nm	1 x 96 wells	88 99 45
Brucella IgM Ab - EIA	450 nm	1 x 96 wells	88 99 86
Chagas EIA	450 nm	1 x 96 wells	88 99 87

For stability at 2-8° C please refer to the respective method sheet

PERSONAL LAB automated Analyzer

SPECIFICATION:

- Open**
- Capable of handling all common types of microplates with U, V or flat bottom wells in whole plates, single wells or strips of 8 to 12 wells.
 - All colorimetric substrate systems with signal between 400 and 700 nm, 8 filters positions; 5 filters preinstalled: 405, 450, 492, 550 and 620 nm
 - Incubation temperature controlled for each plate between ambient and 45°C.

- Compact**
- Minimal bench space: 65 cm x 61 cm x 66 cm (width x depth x height)
 - Weight: 75 kg
 - External PC with separate printer.
 - Low power consumption: 450 W max.
 - Integral container for liquid waste (5 litres).

- Flexible**
- Primary samples in 11 - 16 mm diameter tubes with height 55 - 100 mm.
 - Sample identification with barcodes by wand (optional).
 - Optional automatic predilution of samples before transfer to microplate
 - Wash volume from 100 to 2000 µl, with up to 9 wash cycles.
 - Up to 6 assays on 2 microplates in a single run, ideal for small or large batches

- Robust**
- External PC can store up to 500 assay protocols and 500 profiles with a maximum of 6 protocols each.

Flexible data handling with reports available on-screen, via printer and/or through an optional bi-directional RS-232 interface.

Incorporated in Personal LAB

3 wash bottles, 2 for wash buffer and 1 for distilled water, a 5 l waste tank is contained within the instrument; there is the possibility to add externally an additional wash bottle including a liquid level sensor, as well as an additional waste tank.

Pipetting station

Two precision dilutors and x, y plotter with two independent Z drives for disposable tips (Z1 and Z2), metal probe (Z2) and wash head (Z1).

Flexible microplate station

Can load up to 2 microplates in any common format. Incorporating: two incubators with independent temperature control; 30 positions for reagents and callibrators; wash head with 8 dispensers and 8 aspirators and 16 channel reader.

ELISA READERS AND INSTRUMENTS



EASY WASH Microplate Washer

SPECIFICATION:

Performance

RESOLUTION:	50ul
ACCURACY @ 300µL:	+/-10% well to well
PRECISION (Repeatability) @ 300uL:	5% C.V. or better
PROCESSING TIME (full plate):	350µL x 3 cycles x 12 port; 125 sec. 350µL x 3 cycles x 8 port; 180 sec.
RESIDUAL VOLUME:	<5µL per well
LIQUID CONTACT MATERIALS:	Glass, Polypropylene, Polyethylene, Stainless Steel, Tygon, Teflon, Delrin and Nylon
RECOMMENDED DECONTAMINANTS:	Decon, Virkon or 5% Sodium Hypochlorite solution mixed with deionized

Mechanical & Electrical

DIMENSIONS:	8.5 (H) x 11 (W) x 14.5 (D) inches - Unit only 14 x 20 x 20 inches-shipping
WEIGHT:	10 lbs.-unit only, 23 lbs. - shipping weight
POWER REQUIREMENTS:	100, 120, 220, 240 VAC, 50/60Hz
POWER CONSUMPTION:	30 watts max.
OPERATING TEMPERATURE:	10 - 40 °C
STORAGE TEMPERATURE:	0 - 40 °C
FLUID RESERVOIR CAPACITY:	2L - All reservoirs
PRIME FLUID WASTAGE:	10 ml



ELISA READERS AND INSTRUMENTS

MICROPLATE READER MODEL Σ 960



The AXIOM Model 960 Microplate Reader is a single/dual wavelength photometer for enzyme immunoassays in microtitreplate. It can measure absorbance and calculate concentration of the 96 wells within 60 seconds by means of 8-channel optical system.

SPECIFICATION:	
MICROPLATE CARRIER:	Accommodating all 96-well microplates
WAVELENGTH RANGE:	400 ~700nm
FILTERS:	Two narrow band interference filters mounted in a cassette Bandwidth: 10nm +/- 2nm Filters supplied: 450/600nm (P/N S096001001) Options: 405, 490, 550, 650 Any combination available on request
PHOTOMETRIC METHOD:	Single or dual wavelength measurement
PHOTODETECTOR:	(8) solid-state silicon photodiodes
DISPLAY:	LCD - 20x4 characters
DATA ENTRY:	Via (31) key touch panel
EXTERNAL OUTPUTS:	RS-232C bidirectional interface - for data transfer to a computer with selectable baud rate 300, 600, 1200, 2400, 4800, 9600 Parallel centronics interface - for data output to an external printer
PRINTER:	Built-in thermal printer (40) characters; 112mm width paper
LIGHT SOURCE:	Tungsten Halogen lamp 6V/10W (approx. 2000 hours life)
ABSORBANCE RANGE:	0.000 - 2.500 O.D.
LINEARITY:	0.000 - 2.000 O.D. +/- 1.0% at 405nm
REPRODUCIBILITY:	Less than 1.0% C.V. for O.D. greater than 1.000 at 405nm
STABILITY:	Drifting less than 0.005 O.D./hr after on hour warm-up time
RESOLUTION:	0.001 O.D.
POWER:	90V -126V / 180V - 246V, 50/60Hz, 40W
SPEED:	Less than 60 seconds for 96-well plate
DIMENSION:	425mm in width, 320mm in depth, 150mm in height
WEIGHT:	Net: 12kgs (26.5 Lbs), Shipping: 15kgs (33.0 Lbs)
ACCESSORIES:	- Tungsten Halogen lamp (installed) (P/N 0960013000) - 2 spare fuses (P/N 0530500002 for 100/120V) (P/N 0530690002 for 220/240V) - 4 rolls thermal paper (P/N 0910411003) - RS-232C interface cable (P/N 0580690009) - Parallel centronics cable (P/N 0580690008)
OPTIONS:	

MINIPHOTOMETER M6



The AXIOM Model-6 is a portable ELISA miniphotometer designed to read adsorbance and calculate concentration in either 1x8/1x12 micro well strip or round/square cuvette by interchangeable interference filter in wavelength range of 400 to 700nm.

SPECIFICATION:	
WAVELENGTH SELECTION FILTERS	400 - 700nm by interference filters Narrow band interference filters Standard: 450nm P/N S000601001 Bandwidth: 10nm +/- 2nm
PHOTODETECTOR	solid-state silicon photodiodes
DISPLAY	LCD - 16 characters
EXTERNAL OUTPUTS	- RS-232 INTERFACE - PARALLEL PRINTER INTERFACE
LIGHT SOURCE	Focalized Tungsten lamp 6V/2W
ABSORBANCE RANGE	0.000 - 2.000 O.D.
LINEARITY	0.000 - 1.500 O.D. +/- (1.0%+0.01%)
REPRODUCIBILITY	Better than +/- 0.0005 O.D.
RESOLUTION	0.001 O.D.
POWER	- Input AC 120V or 240V - Output DC 12V/700mA adapter
SAMPLE COMPARTMENT	Strip holder: 9x13mm standard well-strip Round cuvette holder: 12mm in diameter
DIMENSION:	Whole unit: 150(W) x 170(D) x 50(H)mm Optical unit: 50(W) x 50(D) x 50(H)mm
WEIGHT:	850 grammes (with power adapter)

OPTIONAL ACCESSORIES:

1. Cuvette holder (10mm square) P/N S000602003
 - *2. Filters: 405nm P/N S000601005
490nm P/N S000601002
550nm P/N S000601003
600nm P/N S000601004
650nm P/N S000601006
 3. RS-232 cable P/N 0570006004
 4. 40-column printer P/N 0910040002
 5. Centronics cable P/N 0570006006
- *Filters for other wavelengths are available upon special request.*

AXIOM MTC 4 4-CHANNEL COAGULOMETER

COAGULATION

SPECIFICATION:

- Test position with 12 cuvettes for blood sample preparation
- Microcuvettes racks for 4 individual tests
- Magnetic mixing block with 2 racks
- Coding the separate and identical test modes with one programme
- Monitoring complete and precised automatic INR calculation
- Adjustment microgrades with ball method clot detection
- Adjusted test position block as oblique curved
- Ability to print test results

Physical data

- Switch on-off
- 220 V input socket (depending on local supply)
- 3 insert sockets for automatic pipettes
- Serial output socket for printer
- Fuse socket
- Secondary power supply with 12 V DC
- 4 display screen for measuring time
- Numerical key set
- Functional test keys
- Monitoring all test results according to programme models
- The instrument automatically recognizes where the sample or reagent vial has been placed (Autostart testing with Triggering Feature)

Dimensions

HEIGHT:	14 cm
WIDTH:	42,6 cm
LENGTH:	37 cm
WEIGHT:	13,1 Kg (11,5 Kg + 1,6 Kg battery)



DUOCLOT

SPECIFICATION:

NUMBER OF CHANNELS:	2
MEASURING SYSTEM:	photometric
BEAM SOURCE:	tungsten lamp
INCUBATION:	temperature controlled 37°C (± 0.3°C)
CAPACITY:	32 cuvettes and 4 reagent bottles
DISPLAY:	backlight LCD display
KEYBOARD:	alphanumeric
PRINTER:	internal printer
POWER SUPPLY:	AC 220V, 50Hz
DIMENSION:	400x340x128 mm
WEIGHT:	7.1Kg

- *PT: Prothrombin Time or Quick Time
- *aPTT: Activated Partial Thromboplastin Time
- *TT: Thrombin Time
- *Fbg: Fibrinogen Concentration
- *Deficiency Plasma Factor Studies

* = Store at 2°-8°C

Packsizes Ref. No.

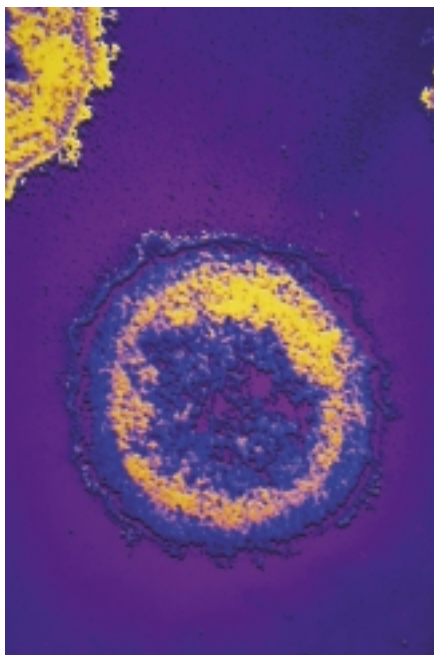
Coagulation

Calcium Thromboplastin	6 x 4 ml	88 28 51
APTT	8 x 3 ml	88 05 12
Fibrinogen	3 x 2 ml	88 01 99
Thrombin	6 x 6 ml	88 01 98
Normal Plasma Control	6 x 1 ml	88 01 97
Abnormal Plasma Control	6 x 1 ml	88 01 96

DUO-CLOT is a bio-channel coagulometer which can test the main parameters used in the plasma coagulation methods. There is an optical measurement system in it for detecting the sudden variation in optical density when plasma coagulation formed. The inter-microprocessor controls the operation and gives us the testing results. Also the results can be expressed by other methods, RATIO or INR.



BLOOD GROUPING SEROLOGY



PRODUCT LIST

BLOOD GROUPING SEROLOGY

I. The ABO - Blood Group System

Lectins Anti-A	monoclonal	Anti-A ₁ agglutinating (Dolichos biflorus)
Anti-B	monoclonal	Anti-A _{1b} agglutinating (Helix pomatia)
Anti-H	agglutinating (monoclonal)	

II. The Rh - Blood Group System

Polyclonal		Monoclonal
Anti-D incomplete (polyclonal, human IgG)		Anti-D incomplete (monoclonal, human IgG)
Anti-CDE incomplete (polyclonal, human IgG)		Anti-D agglutinating (monoclonal, human IgM)
Anti-C incomplete (polyclonal, human IgG)		Anti-D blend (monoclonal, human IgM/IgG)
Anti-c incomplete (polyclonal, human IgG)		Anti-C agglutinating (monoclonal, human IgM)
Anti-Cw incomplete (polyclonal, human IgG)		Anti-C ^w agglutinating (monoclonal, human IgM)
Anti-E incomplete (polyclonal, human IgG)		Anti-E agglutinating (monoclonal, human IgM)
Anti-e incomplete (polyclonal, human IgG)		Anti-c agglutinating (monoclonal, human IgM)
		Anti-e agglutinating (monoclonal, human IgM)

III. The P - Blood Group System

Anti-P ₁ agglutinating (goat)	Anti-P ₁ agglutinating (monoclonal mouse)
--	--

IV. The MNSs - Blood Group System

Anti-M agglutinating (monoclonal, mouse)	Anti-S agglutinating (monoclonal, human IgM)
Anti-N agglutinating (monoclonal, mouse)	Anti-s Coombs-reactive (polyclonal human IgG)
Anti-S Coombs-reactive (polyclonal human IgG)	

V. The Kell - Blood Group System

Anti-Kell rapid slide test and Coombs-reactive polyclonal, human IgG + IgM	Anti-Cellano Coombs-reactive (polycl., human IgG)
Anti-Kell Coombs-reactive (polyclonal, human IgG)	Anti-Kp ^a Coombs-reactive (polycl., human IgG)
Anti-Kell rapid slide and saline tube test (monoclonal human IgM)	Anti-Kp ^b Coombs-reactive (polycl., human IgG)

VI. The Duffy - Blood Group System

Anti-Fya Coombs-reactive (polyclonal, human IgG)	Anti-Fyb Coombs-reactive (polycl., human IgG)
--	---

VII. The Kidd - Blood Group System

Anti-Jka Coombs-reactive (polyclonal, human IgG)	Anti-Jka agglutinating (monoclonal, human IgM)
Anti-Jkb Coombs-reactive (polyclonal, human IgG)	Anti-Jkb agglutinating (monoclonal, human IgM)

VIII. The Lutheran - Blood Group System

Anti-Lua Coombs-reactive (polyclonal, human IgG)	Anti-Lub Coombs-reactive (polyclonal, human IgG)
--	--

IX. The Xga - Blood Group System

Anti-Xga Coombs-reactive (polyclonal, human IgG)

X. The Colton - Blood Group System

Anti-Cob Coombs-reactive (polycl., human IgG)	Anti-Coa Coombs-reactive (polycl., human IgG)
---	---

XI. The Wright - Blood Group System

Anti-Wra agglutinating (polyclonal, human IgM)

XII. The Diego - Blood Group System

Anti-Dia Coombs-reactive (polyclonal, human IgG)

XIII The Lewis - Blood Group System

Anti-Lea agglutinating (monoclonal mouse)	Anti-Leb agglutinating (monoclonal mouse)
---	---

XIV. Coombs - Sera

AHG-serum Blend (Coombs-serum, polycl. rabbit)	AHG-serum (Coombs-serum, polyclonal sheep)
Anti-IgG/monocl. Anti-C3 murine IgM)	monospecific C3b (beta1C/A)
AHG-serum (Coombs-serum, polyclonal sheep)	AHG-serum (Coombs-serum, monoclonal)
monospecific IgG	monospecific C4 (beta 1 E)
AHG-serum (Coombs-serum, polyclonal sheep)	AHG-serum (Coombs-serum, monoclonal)
monospecific IgA	monospecific C3d (alpha 2D)
AHG-serum (Coombs-serum, polyclonal sheep)	
monospecific IgM	

XV. Reagents

Bromelin-solution ready for use (1-drop-technique)	Rh-control-solution for incomplete Rh-testing
Bromelin-control-serum incomplete (polyclonal, human IgG)	LISS-solution modified

DL 6000B CENTRIFUGE for Blood Bag Centrifugation

SPECIFICATION:

- accurate control of temperature
- self-balance function.
- good separation results
- low noise
- safe and reliable
- equipped with electronic lock

TECHNICAL DATA

MAX. SPEED:	6000 rpm
SWING BUCKET:	500 ml x 4 (6000 rpm)
ROTOR CAPACITY:	50 ml x 16 (5000 rpm)
	15 ml x 48 (5000 rpm)
TIME MAX RCF:	6500 (x g)
TEMPERATURE RANGE:	-5°C~30°C
TEMPERATURE ACCURACY:	± 2°C
TIMER RANGE:	0 ~60 min
NOISE:	<70 DB
POWER:	220 V, 50 Hz, 2.5 kW
DIMENSIONS:	580x700x800 mm (LxWxH)
WEIGHT:	140 kg

BLOOD HANDLING AND STORAGE



BLOOD BANK REFRIGERATOR BLCO 420

IN STAINLESS STEEL CABINET

The BLCO 420 is designed especially for blood storage to have 4°C temperature uniformity of refrigerated blood in all conditions.

FEATURE LIST

- Temperature range 4°C +/- 2°C at 43°C ambient
- Digital multi alarm system with battery back up
- Chart recorder for 24 hours or 7 days operation
- Heated glass door with lock
- Full size interior light

SPECIFICATION:

GROSS VOLUME, LITRE:	418
VOLUME BLOOD BAGS:	160 pcs/ 500 ml
TEMPERATURE RANGE:	4°C +/- 2°C
AMBIENT TEMPERATURE:	43°C
ENERGY CONSUMPTION:	8,5 kWh/24 hrs
NET WEIGHT:	80 kg
INSULATION:	50 mm
AOROVALS:	AABB, CE, UL*
DIMENSIONS:	
HEIGHT:	2100
WIDTH:	595
DEPTH:	655
POWER SUPPLY:	220V/115V 50/60 Hz

* For UL version the unit is equipped with Thermomax controller or similar.



AXIOM[®]
DIAGNOSTIC
Gesellschaft für Diagnostica
und Biochemica mbH

SCALES AND BALANCES



The EK-H series has been designed to take portable balance technology one step further. A choice of 4 models are available with capacities up to 6 kg and high 1:60,000 resolution. Easy-to-use electronics make it the ideal partner in the laboratory and industrial environment. Additionally, the EK-H can provide full GLP conformity.

EK-H SERIES

Axiom offers a full range of balances and scales for Industry, Medicine and Laboratory, from 0.01 mg high-resolution analytical balances up to 200 kg capacity platform scales.

EK-H Series of high resolution compact balances, offering a wide selection of operating functions and up to 1:60,000 resolution.

SPECIFICATION:

Model	EK-400H	EK-600H	EK-4000H	EK-6000H
CAPACITY & RESOLUTION:	400g x 0.01 g	600 g x 0.01 g	4000 g x 0.1 g	6000 x 0.1 g
PERCENTAGE RESOLUTION:	0.01/0.1/1%	0.01/0.1/1%	0.01/0.1/1%	0.01/0.1/1%
STABILISATION TIME:	2 sec. typically	2 sec. typically	2 sec. typically	2 sec. typically
SENSITIVITY DRIFT:	(10 ppm/°C (10°C-30°C))			
LINEARITY:	+/- 0.02 g	+/- 0.02 g	+/- 0.02 g	+/-0.02 g
REPEATABILITY/ST D. DEV.:	0.01 g	0.01 g	0.1 g	0.1 g
DISPLAY REFRESH:	5 or 10 times			
OPERATING TEMPERATURE:	+5°C - 40 RH less than 85% No condensation			
PAN SIZE (mm):	133 mm x 170 mm			
DIMENSIONS (WxDxH)(mm):	200 mm x 253 mm x 73 mm			
POWER:	110 V or 230 V AC (AC Adaptor) 50 Hz/60Hz			
WEIGHT:	1.5 kg	1.5 kg	1.6 kg	1.6 kg
STANDARD ACCESSORIES:	AC Adaptor (1), Instruction Manual (1)			
OPTIONS:	Serial Interface (RS 232C); Comparator/relay Output; Serial Interface (Current Loop); Underhook (4000&6000H only); Rech. Battery Pack (NiCd)			
ACCESSORIES:	Standard Printer; Multi-Function Printer; Automatic data collection into Windows-based spreadsheet or database.			

Other models of Analytical Balances and Scales are available on request, please enquire.

PIPETTORS



AXIOM'S NEW AXIOTRONIC PIPETTES

AxioTronic gives you

- a large easy-to-read display
- high and consistent accuracy and precision.
- The best user interface.
- The most widely used pipetting and dispensing modes.
- Extensive memory capacity (9 individual protocols).
- Elimination of medical problems associated with RSI.
- Long battery life (lithium battery).
- Colour coding for easy pipette identification.
- Autoclavability of the lower sections (lower sections can be dismantled).
- Individually adjustable setting of pipetting speed (5 levels).
- Right and left handed use.
- Compliance with standards and regulations (ISO 8655, CE, and GLP).
- Compliance with a great variety of pipette tips (double o-rings at tip bases).
- Low force tip ejection.
- A full micro-range section of single and 8-channel pipettes.
- One year full warranty.
- Affordable pricing.

AXIOTRONIC SINGLE

cat-No.	Description	Colour	Accuracy* % (+ or -)	Imprecision** % (+ or -)
E20-1BA	sg. channel 20-20 ul	Red	5.00/2.50/1.00	2.00/1.15/0.30
E200-1BA	sg. channel 10-200 ul	Yellow	2.00/1.00/0.60	1.00/0.575/0.15
E1000-1BA	sg. channel 100-1000 ul	Blue	1.50/1.00/0.50	0.60/0.375/0.15
E20-8BA	8-channel 20-20 ul	Red	5.00/2.50/1.00	2.00/1.15/0.30
E200-8BA	8-channel 10-200 ul	Yellow	2.00/1.00/0.60	1.00/0.575/0.15

* Max. Random Error (ISO 8655) ** Max. Systematic Error (ISO 8655)

AXIOM L-SERIES PIPETTES

FIXED VOLUME PIPETTES

Order-No.	Volume Range μl	Accuracy %	Repeatability %
L-2009	5	± 4.0	≤ 2.8
L-2010	10	± 2.5	≤ 1.0
L-2011	20	± 2.0	≤ 1.0
L-2012	25	± 2.0	≤ 1.0
L-2013	50	± 2.0	≤ 1.0
L-2014	100	± 1.2	≤ 0.5
L-2015	200	± 1.0	≤ 0.4
L-2016	500	± 1.0	≤ 0.4
L-2017	1000	± 1.0	≤ 0.3

VARIABLE VOLUME PIPETTES

Order-No.	Volume-Range μl	Accuracy %	Repeatability %
L-2018	0.1-2	$\pm 12-1-5$	$\leq 6.00-0.70$
L-2019	1-10	$\pm 2.5-1.0$	$\leq 1.25-0.40$
L-2020	2-20	$\pm 5.0 - 1.0$	$\leq 1.50-0.30$
L-2021	10-100	$\pm 1.8-0.8$	$\leq 0.50-0.15$
L-2022	20-200	$\pm 1.0-0.8$	$\leq 0.50-0.15$
L-2023	100-1000	$\pm 1.5-0.8$	$\leq 0.30-0.15$
L-2024	1000-5000	$\pm 1.2-0.6$	$\leq 0.30-0.16$

8 MULTI-CHANNEL PIPETTES

Order-No.	Volume-Range μl	Accuracy %	Repeatability %
L-2025	2-20	$\pm 6.0-1.5$	$\leq 2.5-0.40$
L-2026	20-200	$\pm 2.5-1.0$	$\leq 1.25-0.50$

12 MULTI-CHANNEL PIPETTES

Order-No.	Volume-Range μl	Accuracy %	Repeatability %
L-2027	2-20	$\pm 6.0-1.5$	d" 2.5-0.40
L-2028	20-200	$\pm 2.5-1.0$	d" 1.25-0.50



PIPETTE SHAKERS Model: PS-8B, Model PS-2A



SPECIFICATION:

DIMENSION:

Model: PS-8B
PS-8B 17.5(L)x16(W)x9(H)cm

NET WEIGHT:

Approx. 1.1 Kgs

POWER SOURCE:

110V/60HZ or 220V/50HZ

(your option)

Model: PS-2A

PS-2A 14(L)x14(W)x15.5(H)cm

3.0 Kgs

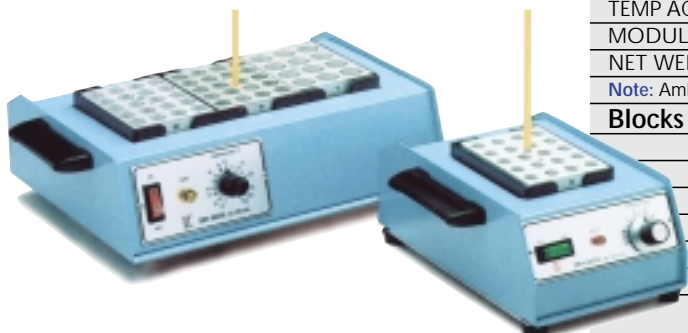
110V/60HZ or 220V/50HZ

Technical data

- Plastic cabinete with 4 round rubber suction feet in the base prevents creeping and scratching.
- Equipped with 2-prond rubber pipette rack for 8 pipettes operation sumulataneously.
- Plastic cabinete is easily for cleaning and avoid rust.
- Variable-Resistance activated operation.
- Variable speed control.
- Comes with 3-Wire cord with CSA approval.
- Palm-size, easy to carry.
- Economical type, low cost.

- Die cast aluminum housing finished with baked enamel with 4 round rubber feet in the base prevents creeping and scratching.
- Equipped with 2-prond spring stainless steel clamps for 6 pipettes operation simulan-cously.
- Switch-activated for continuous operation, or timer-activated operation to preset the time upto 15 (or 30) minutes.
- Fixed oscillation rate at approx. 1500 RPM.
- Comes with a 3-wire cord with CSA approval.

DRY BATH INCUBATORS



SPECIFICATION:	DB-006	DB-005
OVERALL DIMENSION:	30.5 x 33 x 10.5 cm	20.5 x 33 x 10.5 cm
POWER CONSUMPTION:	450 watts	75 watts
POWER SOURCE:	110V or 220V, 50/60HZ	110V or 220V, 50/60HZ
OPERATING RANGE:	Amb. +5°C - 110°C	Amb. +5°C - 110°C
TEMP UNIFORMITY:	+/- 0.5°C	+/- 0.5°C
TEMP STABILITY:	+/- 0.1°C	+/- 0.1°C
TEMP ACCURACY:	+/- 0.2°C	+/- 0.2°C
MODULAR BLOCKS:	3	1
NET WEIGHT:	1.9 kgs (4.18 Lbs)	1.0 kgs (2.2Lbs.) approx.

Note: Ambient operating range: 20°C - 30°C

Blocks available: (Must be ordered separately)

Part No.	Tube size	Well size (MM)	No. of wells
DB-1020	10mm	10.5	20
DB-1220	12mm	12.7	20
DB-1320	13mm	13.8	20
DB-1612	16mm	16.6	12
DB-1812	18mm	18.6	12

Remarks: 1) Other sizes of blocks are available upon request.
2) 1.5ml Eppendorf Micro Tube blocks is available.

Heat-up time of loaded blocks:

TEMPERATUR	37°C	56°C	100°C
MINUTES (DB-006)	6,5°C	17.4°C	25.5°C



- Built-in stirrer ensures excellent uniformity
- Microprocessor control ensures precise temperature setting and accuracy
- High quality at inexpensive cost

THERMOSTATIC WATER BATH

SPECIFICATION:	YCW-010	YCW-04M	YCW-010
VOLUME:	22 L	10 L	22 L
UNIFORMITY:	0.5 °C	0.5 °C	0.5 °C
HEATER:	1 KW	1 KW	1KW
READOUT:	Thermometer	Thermometer	LED
TEMPERATUR			
CONTROLLER:	PID, +/-0.1 °C	Bimetallic Thermostat	Bimetallic Thermostat
STIRRER:	built-in	built-in	built-in

Note: Other capacities for YCW-010 available upon request

VORTEX MIXER MODEL: VM-300

SPECIFICATION:	Model: VM-300
OVERALL DIMENSION:	13(W)x16(D)x18(H)cm
NET WEIGHT:	4.8Kgs (10.6 Lbs) approx.
POWER SOURCE:	110V/60HZ or 220V/20HZ (Your option and alternative)

Technical data

- Variable speed control from 0 - 3200 RPM provides gentle or vigorous Vortexing for your mixing needs.
- Equipped with high quality built-in rheostat for long operation.
- 2 interchangeable mixing heads, ie: snap on the 34 cm diameter rubber cup for conventional single tube mixing, or a 3" dia platform pad for multiple tubes and one flask mixing.
- 2 - mode operation features "TOUCH" for intermittent operation, or "SWITCH" activated operation at the flip of a switch for continuous mixing.
- Stirring intensity can be controlled in "TOUCH" mode by applying the pressure to the mixing pad.
- Heavy cast-iron body and rubber feet prevent mixer from slipping and creeping due to the vibration.
- Body finished with high quality baked enamel.
- Comes with 3-wire cord and plug (Plug CEE or ANSI type, your option)
- Quality guaranteed, spare parts can be supplied readily.

Optional Accessory:

VM-300-1	Single tube cup head
VM-300-2	3" platform head



HOMOGENED PROFESSIONAL ROLLER/SHAKER

The Homogend Professional device is suitable for homogenisation of blood and other samples being in closed tube. The indulgent and thorough homogenisation is indispensable for the haematology automations operating WBC differentiation.

What is the difference between the HOMOGENED Professional homogenisator and the traditional homogenisators?

- Thorough homogenisation
 - Indulgent homogenisation
 - Reliable operation
 - Easy to clean
- simultaneously rotating and shaking movement
free of reflected wave shaking movement, based on a scientific method
new technical solutions
simply removable homogenisation table

Technical data:

- HOMOGENISATION TABLE WITH 10 SPACES
- MAIN VOLTAGE: 220/110V 50/60 Hz
- POWER CONSUMPTION: max. 7 VA
- WEIGHT: 1.5 kg
- DIMENSIONS (W/L/H): 270/220/75 mm

LAB
EQUIPMENT



DIFFERENTIAL COUNTER

MODEL: DBC - 6x9

8 Unit Lab-Count with Totalizer. For simplifying differential blood cell counts. This counter eliminates the calculations necessary when making Leucocyte counts. The eight keys represent the eight normal schilling groups of Leucocytes, ie: Baso, Eosin. Myelo. Juven. Stab. Seg. Lymph. Mono. Above each key is the name and picture of particular cell.

When a total of one hundred cells is counted, a bell rings. The percentage of each type of cell is then read directly from the window above each key. Counter clockwise rotate handle, it will clear all figures.



ELECTRONIC DIFFERENTIAL COUNTER

Model: DBC-8E - Technical data

- Light weight and compact for easy transportation.
- 8 unit Lab-count with Totalizer. For simplifying differential blood cell counts. This counter eliminates the calculations necessary when making Leucocyte count.
- The eight keys represent the eight normal Schilling groups of Leucocytes, ie: BASO. EOSIN. MYELO. JUVEN. STAB. SEG. LYMPH. MONO. Each stroke registers both in the unit corresponding to its pressed key and in the Totalizer.
- The short sound comes after every stroke of key, when the Totalizer records to 100, 200, 300 etc., a long sound buzzes. The percentage of each type of cell is then read directly from the window above each key.
- Function of CLEAR. - Press the key of CLEAR, it will clear all figures and all the units register ZERO.
- Funktion of CORRECTION - To correct the possible error counting, press the key of "CORR." as well as the error-count key, it will decrease the figure by one (1) each stroke from the keys concerned. To back to the normal counting, press "CORR." one more time.
- Function of LOCK - To keep the counting results from being touched carelessly, press "LOCK" key to lock all keys unless one more press of "LOCK" key.
- This counter can apply to other fields for counting purpose.



SHAKER MODEL: VRN-360

SPECIFICATION: Model: VRN-360
OVERALL DIMENSION: 29(L)x32(D)x19.5(H)cm
PLATFORM: 20x29cm
POWER SUPPLY: 110 VDC or 220 VDC, dual 50/60HZ

Technical data

- Equipped with heavy duty Gear Motor with quiet running.
- Variable speed control ranging from **70-230 RPM** (Tolerance), Provides gentle shaking to violent agitation. Fixed speed at **130 RPM** (Or 100 RPM) or changeable to meet your need.
- **Orbital motion at 3/4" horizontal.**
- **Built-in Timers**, preset number of minutes upto 15 minutes, or set for continuous operation.
- Built-in Speed Gauge for reference of speed going.
- Comes complete with heavy duty ABS housing, durable, light weight, and free from rust.
- Application for Alpha, Kline, Mazzini, Syphilis, Pregnancy and other chemical tests makes this shaker an ideal and dependable instrument.



AXIOM[®]
DIAGNOSTIC
Gesellschaft für Diagnostica
und Biochemica mbH

CENTRIFUGES

A complete program of Centrifuges for almost every application. Reliable quality, competitive price!

An ideal instrument for the separation, precipitation and concentration of samples such as blood samples in hospitals, scientific research institutes and biological production.

The DL-5000B uses a compressor made in France to refrigerate. The motor is controlled by an inverter which also controls the whole instrument.

SPECIFICATION:

- accurate control of temperature
- self-balance function.
- equipped with electronic lock
- good separation results
- safe and reliable
- low noise



TDL-40B CENTRIFUGE

The working chamber was made of high quality sheet steel of corrosion-resistant stainless steel safe and easy to use Intelligent temperature controller was based

FEATURES:

- large capacity
- low noise
- steady performance
- microcomputer controlled
- simple and convenient operation
- safe and reliable
- equipped with electronic lock

REFRIGERATED MODELS PROGRAM:

Model	max.speed rpm	max. RCF	Rotor Capacity	Dimensions (LxWxH, mm)	Weight
GL-20G-II	20,000	25,480 x g	Rotor No.1:5 ml x 12 (20,000 rpm) Rotor No. 2:10 ml x 12 (16,000 rpm) Rotor No. 3:50 ml x 6 (14,000 rpm)	450x540x655	72 kg
GL-16G-II	16,000	17,000 x g	Rotor No. 1:1.5 ml x12 (16,000 rpm) Rotor No. 2:1.5 ml x24 (12,000 rpm) Rotor No. 3:10 ml x12 (10,000 rpm) Rotor No. 4:80 wells (6,000 rpm)	450x540x655	72 kg
TGL16GA	16,000	17,000 x g	Rotor No. 1:1.5 ml x12 (16,000 rpm) Rotor No. 2:1.5 ml x24 (12,000 rpm) Rotor No. 3:10 ml x12 (10,000 rpm) Rotor No. 4: 80 wells (6,000 rpm)	500x560x490	65 kg
TGL-16G	16,000	17,000 x g	Rotor No. 1:1.5 ml x12 (16,000 rpm) Rotor No. 2:1.5 ml x24 (12,000 rpm) Rotor No. 3:10 ml x 12 (10,000 rpm) Rotor No. 4:80 wells (6,000 rpm)	500x560x490	65 kg
DL-5000B	5,000	6,000 x g	Rotor No. 1:1,200 ml x 6 Rotor No. 2:500 ml x 6	700x820x840	206 kg
DL-6000B	6,000	6,500 x g	500 ml x 4 (6,000 rpm) 50 ml x 16 (5,000 rpm) 15 ml x 48	580x700x800	140 kg
TDL-5000B	5,000	5,000 x g	Rotor No. 1:250 ml x 4 (5,000 rpm) 50 ml x 8 (4,000 rpm) 10 ml x 36 (4,000 rpm) Rotor No. 2:6 ml x 96	500x580x540	94 kg
DL-5000B-II	5,000	5,000 x g	Rotor No. 1:250 ml x 4 (5,000 rpm) 50 ml x 8 (4,000 rpm) 10 ml x 36 (4,000 rpm) Rotor No. 2:6 ml x 96	470x570x655	108 kg
DL-4000B	4,000	3,880 x g	Rotor No. 1:500 ml x 6 (4,000 rpm) 50 ml x 24 (4,000 rpm) 15 ml x 72 (4,000 rpm) Rotor No. 2:192 wells (3,500 rpm)	580x700x800	140 kg
DDL-5	5,000	2,680 x g	Rotor No. 1:6 ml x148 (4,000 rpm) Rotor No. 2: 5ml x 18 (5,000 rpm) 7ml x 18 (5,000 rpm)	470x570x655	130 kg

NON-REFRIGERATED MODELS PROGRAM:

LXJ-IIB	5,000	6,000 x g	500 ml x6 (5,000 rpm) 50 ml x24 (5,000 rpm) 15 ml x72 (5,000 rpm)	560x660x740	100 kg
DL.-5-B	5,000	5,000 x g	250mlx4 (5,000 rpm) 50 mlx8 (5,000 rpm) 10 mlx36 (5,000 rpm)	430x540x655	90 kg
TDL-5-A	5,000	5,000 x g	Rotor No. 1:250 ml x4 (5,000 rpm) 50 ml x8 (5,000 rpm) 10 ml x36 (5,000 rpm) Rotor No. 2:6 ml x 96	430x540x425	40 kg
TDL-5	5,000	5,000 x g	Rotor No. 1:250 ml x 4 (5,000 rpm) 50 ml x8 (5,000 rpm) 10 ml x36 (5,000 rpm) Rotor No. 2: 6 ml x 96	430x530x425	40 kg
TDL-60B	6,000	3,850 x g	15 ml x12	320x355x310	15 kg
TDL-50B	5,000	2,500 x g	15ml x8	320x355x310	20 kg
TDL-40B	4,000	2,770 x g	100 ml x4 (4,000 rpm) 50 ml x8 (4,000 rpm) 15 ml x16 (4,000 rpm)	400x480x360	20 kg
TGL-16B	16,000	17,000 x g	0.5 ml x18 (16,000 rpm) 1.5 ml x12 (16,000 rpm)	230x285x265	12 kg
TGL-16C	16,000	17,000 x g	1.5 x12 ml (16,000 rpm) 7 ml x8 (12,000 rpm)	230x285x265	12 kg
TGL-16G	16,000	17,000 x g	1.5 x12 ml (16,000 rpm) 5 ml x10 (12,000 rpm)	230x285x265	12 kg
TGL-16GB	12,000	12,000 x g	48 x0.5 ml	320x355x310	20 kg
TGL-12B	12,000		24 pieces of capillary	230x285x265	12 kg
KA-1000	4,000	2220 x g	15 ml x 8	300x335x275	14 kg
80-2B	4,000	2325 x g	20 ml x 12	280x310x265	12 kg
TDL-4	4,000	1,430 x g	20 ml x 6	230 x 285 x 265	10 kg
800B	4,000	1,430 x g	20 ml x 6	245 x 210 (DxH)	5 kg
LDJ-5A	5,000	3,850 x g	15 ml x 34	560x650x1000	130 kg
LTJ-5B	5,000	3,500 x g	15 ml x 28	510 x 570 x 880	95 kg

TABLE TOP CENTRIFUGE

Model	Capacity	Max. rpm	Max. RCF	Dimension	70 x 270 x 250 mm
PLC-02	6x10ml or 15ml	4500	2422 x g	Timer	60 minutes
PLC-03	8x10ml or 15ml	4500	2422 x g	Choice of motor	Output 90 W (opt. 67 W)
PLC-05	12x10ml or 15ml	4000	2057 x g	N. Weight (kg)	8.9
	12x5.0ml or 15ml	4000	2057 x g	Safety shutout	optional
				Quality standards	ISO9002/13488, GMP, CE marked, FDA listed

Suggested Tubes: 5ml: 12x75 mm, 10ml: 16x100mm, 15ml: 17x117mm (or 120mm)

Option: Automatic shutout safety device and cover lock

MICRO HAEMATOCRIT CENTRIFUGES

- To provide a desired testing for test tubes containing in vitro diagnostic specimens for qualitative or quantitative test procedures.
- The most inexpensive and best-selling centrifuge in market that everyone can afford, ideal for general laboratory in hospital, clinic, veterinary, industry and education.
- Comes with 45° angle rotor head.
- Automatic balanced system to eliminate vibration.
- This equipment complies with CE electromagnetic compatibility requirements of EN60601-1-2 and IEC 801 series regulations.
- Air intake holes in chamber help keep centrifuge cool during extended use.
- Heavy base and 3 rubber suction feet to avoid creeping and moving. Timer activated operation.
- Various speed control. Dial regulate control knob from 0-4000 (or 4500) rpm.
- Choice of automatic shutout safety device when open cover during spinning.

Model	KHT-410 E	KHT-430 B	KHT-400
Overall dimension	250x295x235 mm	305x355x320 mm	255x300x240 mm
Brake	Manual	Automatic	Manual
Speed control +/- 10 %	Fixed 12000 rpm	Fixed 12000 rpm	Fixed 12000 rpm
Timer	LED 99 minutes	LED digital	Mechanical 60 min.
Standard accessory	Rotor F-2415 with lid + Reader		
Max. RCF x g	14,490 x g at 12000 rpm		
Quality standard	ISO9002, ISO13488, CE marking, GMP, FDA		
Capillary tubes	I.D. 1.1-1.2 mm; wall 2mm, Length 75 mm		
Safety device	Locking latch, automatic shutout when open the lid		

UNIVERSAL CENTRIFUGES

Model	PLC-012E	PLC-024
Dimension	305x355x320 mm	450x440x410 mm
Motor	80 W	80 W
Tachometer	LED digital	Dial tachometer
Timer	LED digital, 99 min	LED digital, 99 min
Brake	yes	yes
Locking latch	yes	yes
Safety shutout	yes	yes
Quality Standard	ISO, CE, GMP, FDA	ISO, CE, GMP, FDA

Rotor head data:

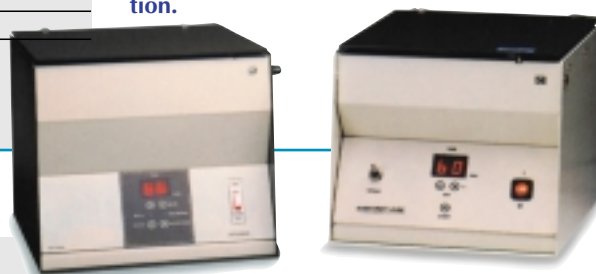
Rotor No.	Capacity (ml)	Max rpm / RCF		Suggested tube (OD x L)
		PLC-012 (E)	PLC-024	
A-0815	8x10 (or 15) ml	6400 / 4900 x g	x	16 x 100 or 17 x 120 mm
A-1215	12x10 (or 15) ml	5700 / 4180	x	16 x 100 or 17 x 120 mm
A-2405	24 x 5 ml	6400 / 4715	x	12 x 75 mm
H-1615	16 x 10 (or 15 ml)	5000 / 3500	x	16 x 100 or 17 x 120 mm
H-0450	4 x 50 ml	5000 / 3300	x	30 x 115 mm
A-6006	60x 0.6 ml	8300 / 6160	x	0.6 ml Eppendorf
F-1615	24 x 1.5 ml	7200 / 4640	x	1.5 ml Eppendorf
A-2415	16 x 1.5 ml	11000 / 12175	x	1.5 ml Eppendorf
F-2406	24 x 0.6 ml	11000 / 12175	x	0.6 ml Eppendorf
F-2415	24 x 0.75 ml	12000/14490	x	12 x 75 mm Capillary
H-2415	24 x 10 (or 15) ml	N/A	3500rpm / 2260 x g	16 x 100 or 17 x 120 mm

CENTRIFUGES



FEATURES:

- General clinic test of hematocrit value (HCT), which defines the percentage of Red Blood Cells against the the whole body reflecting the status of Red Blood Cells. May be used to detect the percentage of anaemia or polythemia.
- KHT-430B brakes automatically when the preset time has elapsed.
- CE marked equipment, complies with EC Electromagnetic Compatibility requirements of EN60601-1-2.
- EMI filter designed in conformity with EEC 89/336-EMC Directive.
- Choice of LED digital or mechanical timer to meet your cost requirements.
- KHT-410E is designed with an easy-to-move mini-size construction.
- KHT-400 features timer-activated operation.



- All in one concept helps saving your cost. Select various types of rotors that allow you to process different sizes of centrifugal tubes.
- Safety locking latch and inter switch shut out motor automatically when opening the lid during spinning, and prevent the centrifuge from accidental starts while loading.
- Various speed control by turning the control knob, from 0-12000 rpm for PLC-012E and from 0-3500 rpm for PLC024.
- CE marked equipment, complies with EC Electromagnetic Compatibility requirements of EN60601-1-2.
- EMI filter designed in conformity with EEC 89/336-EMC Directive.
- High efficient motor accelerates to the max. speed and brakes to complete stop in short time.

AXIOM[®]
DIAGNOSTIC
Gesellschaft für Diagnostica
und Biochemia mbH

STERILIZERS OVENS INCUBATORS

Power of Innovation:
For better Sterilization
Autoclaves:
Fully Automatic V-Series

AXIOM V-SERIES



FEATURES:

- Fully automatic, microprocessor control including 12 programs for the sterilisation of:
 - Solids
 - Waste destruction bags
 - Liquid waste
 - Liquid Media
 - and for Cleaning
- Integrated separate steam generator (no heating elements in sterilization chamber)
- Novel safety ring-lock closure system with lip seal
- Temperature and steam pressure up to 140°C / 4 bar, extendable to 150°C / 5 bar
- Thermal lock: door lock controlled by pressure and medium temperature according to Pressure Vessel Regulations
- Flexible PT-100 temperature sensor for reference vessel
- Medium temperature-controlled sterilization time
- Electronic pressure transducer for pressure and temperature control
- "Autofill" - Automatic demineralized water feed for steam generation
- Special program for waste destruction with pulsating heat-up period for improved ventilation of waste bags
- Start by clock / timer for programmed start time
- Steam exhaust condensation, water cooled, thermostatic controlled
- Common collector connection for all outlets
- Emptying valve
- Base plate for vessels, baskets etc.
- Validation port
- RS 232 interface for external data transfer
- Prepared for subsequent printer installation
- Prepared for subsequent rapid cooling installation
- Prepared for subsequent installation of vacuum system
- Prepared for subsequent drying installation
- Safety cut of at low water level
- Safety cut of at excess temperature

Laboratory autoclaves **Axiom V-series** are characterized by their modern design, user-friendly functions and state-of-the-art technology.

Axiom V-series autoclaves are fitted ex-factory with a temperature-controlled door lock according to Pressure Vessel Regulations for the sterilization of liquids and according to ISO/DIN regulations. In addition, the doors remains locked as long as there is excess pressure in the chamber.

Control mechanisms:

A specially developed microprocessor regulates all the functions of the autoclave. These include steam pressure, temperature, sterilization time as well as the optional functions of rapid cooling, pre- and post-vacuum and drying. In cases of deviation from the set values, a corresponding alarm is displayed.

Control is by menu and easy to operate. All sterilization parameters can be altered by using special numerical codes. The control panel is ergonomically integrated into the plastic lid cover of the autoclave.

Technical data Axiom V-Series:

Type	Chamber dimensions Diameter x depth in mm	Chamber Volume in liters
V-65	400 x 500	65
V-75	400 x 600	75
V-95	400 x 750	95
V-100	500 x 500	100
V-120	500 x 600	120
V-150	500 x 750	150

Also Available on request: Horizontal Autoclaves/Steam Sterilizers

DHG-9000 101 SERIES

CHARACTERISTICS OF THE PRODUCT

- Working chamber made of high quality sheet steel of corrosion-resistant stainless steel
- Safe and easy to use
- Intelligent temperature controller, microprocessor based with PID parameters controlling accuracy and reliability
- Vertical hot air circulation system, featuring low noise fan and optimal air duct reaching a uniform temperature inside the working chamber

Type	9040A (S) 101A(S)-0	9070A (S) 101A(S)-1	9140A (S) 101A(S)-2	9240A (S) 101A(S)-3	9640A (S) 101A(S)-4
Main voltage	220V/50 Hz	220V/50 Hz	220V/50 Hz	380V/50 Hz	380V/50 Hz
Temperature control range	RT+5-300°C	RT+5-300°C	RT+5-300°C	RT+5-300°C	RT+5-300°C
Temperature fluctuation	+/-1°C	+/-1°C	+/-1°C	+/-1°C	+/-1°C
Follow-up alarm	+5°C	+5°C	+5°C	+5°C	+5°C
Power	1000 W	1500 W	2000 W	2500 W	4500 W
Consumption					
Dimensions of working chamber	35x35x35 cm	45x45x35 cm	55x55x45 cm	75x60x50 cm	100x80x80 cm

STERILIZERS
OVENS
INCUBATORS



AXIOM'S YCO SERIES OF HOT AIR OVENS/STERILIZERS AND IN SERIES OF LAB INCUBATORS

All equipment features a double wall construction for durability and good heat retention. The fiberglass insulation and door gasket prevent heat loss and maximize energy efficiency. An adjustable fresh air inlet vent at the bottom provides control of the amount of convected air. All equipment accommodates with a stainless steel wire-rod with nickel-plated shelves. The incubators feature an interior glass door that lets you monitor the lab sample without disturbing the chamber environment.

Microprocessor Control: (Mechanical convection)

- Hot PID (Proportional/integral) temperature control with single set point ensures accurate temperature regulation.
- LED digital display shows actual (PV) and preset chamber temperatures (SV) providing an easy way to monitor the temperature condition.
- Over-temperature safety device automatically shuts off heater should heating temperature exceed the set point by 10° C preventing samples from overheating.
- Temperature is preset by touching pad up/down providing the most accurate and stable performance.
- Mechanical convection with blower circulates heated air throughout the chamber for improved uniformity.
- A 99 hours electronic digital timer provides sufficient time for incubating and sterilizing.

TEMPERATURE RANGE: 300°C (Hot Air Oven)
99.9°C (Incubator)

RESOLUTION: 1°C

DISPLAY: 3-digit LED

STABILITY: 0.1°C

UNIFORMITY: +/- 1°C at 37°C; +/-2°C at 200°C

CONTROL TYPE: PID microprocessor

SAFETY DEVICE: Over temperature cutoff (alarm)

CONSTRUCTION: Stainless steel interior & Powder coated exterior

SPECIFICATION:

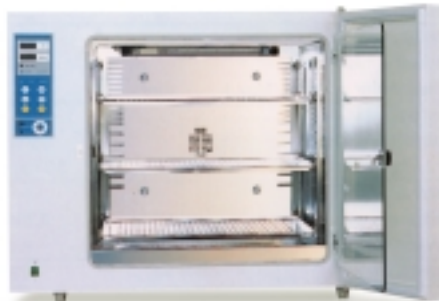
Model	Capacity (Liters)	Chamber (mm)	Shelves	Timer (hours)	Watts Inc./Oven	Convection
010-16	16	250x250x250	1	99	350/600	Fan
010-36	36	330x330x330	2	99	350/750	Fan
010-57	57	385x385x385	3	99	350/750	Fan
010-75	75	420x420x425	3	99	350/1000	Fan

Hot Air Ovens/ Sterilizers are designed for general purposes in a variety of applications such as baking, drying, preheating, curing for dry content analysis, chemical resistance studies, glassware drying, dry sterilization. Lab Incubators were designed for microbiological and biochemical studies such as tissue culture and viruses incubation.



AXIOM[®]
DIAGNOSTIC
Gesellschaft für Diagnostica
und Biochemica mbH

STERILIZERS OVENS INCUBATORS



**Axiom HF 212 CO₂-Incubator
with UV light disinfection**



THE AXIOM HF-SERIES OF CO₂-INCUBATORS

Axiom is offering 4 models of CE marked CO₂-Incubators for research labs and clinical centers:

- **HF 151UV** (151 liters Volume with UV disinfection)
- **HF 212UV** (212 liters volume with UV disinfection)
- **HF 90** (151 liters volume with 90° C moist heat disinfection)
- **HF 240** (240 liters volume with 90° C moist heat disinfection)

Microprocessor Control

All control functions and data are controlled by a microprocessor. If a failure happens, the microprocessor will give out warning messages and "Error Code" messages.

Precise CO₂-Control

Based on the proven thermal-conductivity testing method, a reliable CO₂-Incubators measuring sensor is installed to measure and control the concentration of CO₂ in the gas chamber, which ensures long-term stability of pH-values, even in the lower CO₂ range.

Reliable Temperature Control

High grade temperature sensor made of platinum (Pt1000), together with the microprocessor controller ensures accurate and reliable temperature measurement and control. Thus, the incubators can offer a reliable temperature control within the control range from RT + 5° C to 50° C. Even more, an independent temperature sensor for over-temperature protection is installed for double controlling. It will take over the temperature controlling function if the main temperature controller fails.

Interior Design

Smooth and corrosion-resistant stainless steel surface with special designed round inner corners makes cleaning work easier.

SPECTRO- PHOTOMETERS

SP8001 UV-VIS SPECTROPHOTOMETER

FEATURES:

- 2 nm spectral wavelength
- microprocessor-based automatic measurement
- user-programmable menu type
- selected scanning speed
- high contrast backlit LCD display
- versatile sample compartment
- serial & parallel interfaces
- time based kinetics

TECHNICAL CHARACTERISTICS:

RANGE:	Na 0:250 mEq/L
	K 0:10 mEq/L or 0:250 mEq/L
	Li 0:2,5 mEq/L
	Wavelength
	Na 589 nm
	K 766 nm
	Li 671 nm
SAMPLE VOLUME:	10 µL
FILTERS:	3 interferential filters 589, 670 and 767 nm
RESPONSE TIME:	less than 10 sec.
POWER SUPPLY:	220 V a.c. / 50 Hz (110 V a.c. / 60 Hz)
SIZE:	30,5 x 31,5 x 31,5 cm
WEIGHT:	12 Kg net
INTERFACE:	RS 232



SP-1103 VISIBLE SPECTROPHOTOMETER

FEATURES:

- Auto 100%T/OA and 0%T.
- The test results are displayed by a Large digital LCD displayer and are displayed digitally from 0 to 100% Transmittance or 0 to 1.99 Absorbance over a continuous wavelength range of 360 to 1000 nm
- Sample compartment contains both round test tube and square cuvette(require a adapter).
- Silicon photodiode detector covers the entire wavelength, eliminating the need to change detector.
- 10 nm spectral bandwidth provides the sensitivity and performance required for almost all applications.
- Built-in stray light filters.
- Able to test micro samples.

SPECIFICATIONS:

OPTICAL SYSTEM:	Littrow Mounting, single beam, 1200l/mm grating optical system
WAVELENGTH RANGE:	360-1000nm
SPECTRAL BANDWIDTH:	6 nm
WAVELENGTH ACCURACY:	±2 nm
WAVELENGTH READABILITY:	±1 nm
STRAY RADIANT ENERGY:	Less than 1% at 340 nm
PHOTOMETRIC RANGE:	0-100 %T, 0-1.99A
PHOTOMETRIC ACCURACY:	±2%T
LIGHT SOURCE:	6V/10W Tungsten Halogen Lamp
SAMPLE CONTAINER:	ø12mm test tube or 10x10x45mm rectangular cuvette (require a adapter)
DETECTOR:	High sensitivity silicon photodiode
STANDARD ACCESSORIES:	Instruction manual, Dust cover, 10x10x45 rectangular cell
OPTIONAL ACCESSORIES:	



SPECTROPHOTOMETERS



The Spectrum SP-1102 Spectrophotometer (Spectrum 22ED Spectrophotometer) is designed to meet the needs of both students and instructors. As a general laboratory instrument, the SP-1102 (Spectrum 22ED) features include a 10 nm bandwidth, an overall wavelength range of 400 nm to 900 nm, Transmittance/ Absorbance test mode, automatic blanking, a large LCD digital display. You can use the SP-1102 (Spectrum 22ED) for spectrophotometric experiments in the visible wavelength region of the electromagnetic spectrum and the operation of instrument as simple as 1...2...3...4.

SPECTROPHOTOMETERS

SPECIFICATION:	SP-830PLUS	SP-870PLUS
WAVELENGTH RANGE:	320-999nm	320-1100nm
BANDWIDTH:	<5 nm	2 nm
WAVELENGTH ACCURACY:	+/- 2 nm	+/- 2 nm
ABSORBANCE:	-0.300 - 3.500A	-0.300 - 3.500A
CONCENTRATION:	0.000-2,999	0.000-99,999.99
FACTOR:	1-999	0.1-9,999.9
PHOTOMETRIC ACCURACY:	0.005A at 1.000A	0.005A at 1.000A
STABILITY:	0.003A/hr at 0A (1/2h)	0.003A/hr at 0A (1/2h)
STRAY LIGHT:	<0.1%T at 340nm	<0.1%T at 340 nm
LIGHT SOURCE:	Halogen Lamp	Halogen Lamp
GRATING SPEED:	4500 nm/min	1200 grooves/mm ruled grating
CUVETTES:	A. Round cuvette 10-13 mm B. Square cuvette 10 mm C. Rectangular cuvette 50 mm	A. Round cuvette 10-13 mm B. Square cuvette 10 mm C. Rectangular cuvette 50 mm D. 25.4 mm Round cuvette
DISPLAY:	10 x 2 LCD	16 x 2 LCD (large character)
DATA STORAGE:	N.A.	100 sets
INTERFACE:	Printer	RS232C, Printer
DIMENSION (W/D/H)mm:	400 x 300 x 145	400 x 300 x 145
WEIGHT:	7,5 kg	7,5 kg
POWER:	100-240 V; 50/60 Hz	100-240 V; 50/60 Hz
PC SOFTWARE:	NA	Data collection from saved memory. Real time data display and storage
MEASUREMENT MODE:	A/%T/C	A/%T/C
FUNCTION:	Lamp tuning, Validation	Lamp time, Initial Wavelength, Resolution, Lamp tuning



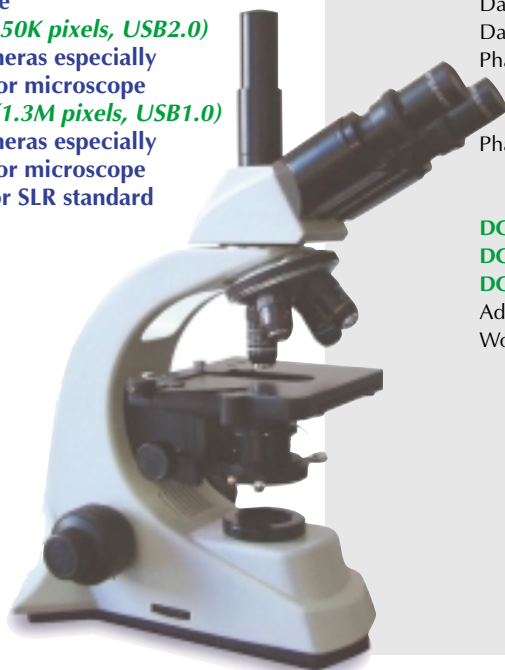
MICROSCOPES

BM-500 · BM-502B · BM-502T
BM-503B · BM-503T

- Fully coated optical system offers sharp and distinct images over the field of view
- The coaxial focusing with ball-bearing guide works accurately and smoothly over focusing range. It comes with built-in tension adjustment. The focus stop is adjustable for preventing damage to slides and objectives.
- Focusing range: 15mm. Fine focusing graduation: 0.002mm
- The integral mechanical stage 132mm X 145mm with specimen holder offers a moving range 50mm X 76mm, which is controlled by coaxial knobs at low position for comfortable operation.
- Field diaphragm available for option (BM-500) or included (BM-502B, BM-502T, BM-503B, BM-503T), to be mounted on the base lens.

A wide range of accessories is available for option:

- Wide-field eyepieces WF15X-13mm
- **Focusable wide-field eyepiece WF10X-18mm with built-in reticule**
- Dark-field condenser (dry) and dark-field condenser (wet)
- Phase contrast set (I) including:
- DIN achromatic objectives 10X, 20XR, 40XR, 100XR
- Phase contrast condenser; Eyepiece 10X for centering
- Phase contrast set (II) including:
- DIN plan achromatic objectives 10X, 25XR, 40XR, 100XR
- Phase contrast condenser; Eyepiece 10X for centering
- **DCM35 (350K pixels, USB1.0) digital cameras especially designed for microscope**
- **DCM35 (350K pixels, USB2.0) digital cameras especially designed for microscope**
- **DCM130 (1.3M pixels, USB1.0) digital cameras especially designed for microscope**
- Adaptor for SLR standard camera



AXIOM'S NEW BM-500 SERIES OF BIOLOGICAL MICROSCOPES

BIOLOGICAL MICROSCOPE BM-500, BM-502, BM-503 SERIES

STANDARD SPECIFICATION:

Item	Specifications	BM-500	BM-502B	BM-502T	BM-503B	BM-503T
Observation	Binocular head	●	●		●	
Head	360° rotating & 30° inclined					
	Trinocular head			●		●
	360° rotating & 30° inclined					
Wide-field	WF10X-18mm	●●	●●	●●	●●	●●
Eyepiece	WF15X-13mm	○	○	○	○	○
Nosepiece	Quadruple nosepiece	●	○	○	○	○
	Quintuple nosepiece	○	●	●	●	●
DIN	4X / 0.10	●				
Achromatic Objectives	10X / 0.25	●				
	40XR / 0.65	●				
	100XR(oil) / 1.25	●				
	60XR / 0.85	○				
	20XR / 0.40	○				
DIN Semi-plan	4X / 0.10		●	●		
Achromatic Objectives	10X / 0.25		●	●		
	40XR / 0.65		●	●		
	60XR / 0.85		●	●		
	100XR(oil) / 1.25		●	●		
DIN Plan	4X / 0.10		●	●		
Achromatic Objectives	10X / 0.25		●	●		
	40XR / 0.65		●	●		
	60XR / 0.85		●	●		
	100XR(oil) / 1.25		●	●		
Stage	Built-in mechanical stage Size 132mm X 145mm Moving range 50mm X 76mm	●	●	●	●	●
Condenser	N.A.1.25 Abbe condenser with iris diaphragm & filter holder	●	●	●	●	●
Illumination	Halogen bulb 20W/6V Adjustable intensity University power 85V-265V	●	●	●	●	●
Focusing System	Coaxial focusing system with built-in tension adjustment and focus stop	●	●	●	●	●
		○	●	●	●	●
Field diaphragm	Field diaphragm on base lens					
Packing	Each set in a foam in a carton	●	●	●	●	●

●: Item included ○: Item for option

Accessories for option:

Wide-field eyepieces WF15X-13mm
Focusable wide-field eyepiece WF10X-18mm with built-in reticule
Dark-field condenser (dry)
Dark-field condenser (wet)
Phase contrast set (I) including:
DIN achromatic objectives 10X, 20XR, 40XR, 100XR(oil)
Phase contrast condenser; Telescopic eyepiece 10X.
Phase contrast set (II) including:
DIN plan objectives 10X, 20XR, 40XR, 100XR(oil);
Phase contrast condenser; Telescopic eyepiece 10X.
DCM35 (350K pixels, USB1.0) digital camera especially designed for microscope
DCM35 (350K pixels, USB2.0) digital camera especially designed for microscope
DCM130 (1.3M pixels, USB1.0) digital camera especially designed for microscope
Adaptor for SLR standard camera
Wooden case with lock & keys

BIOLOGICAL MICROSCOPE MODEL BM-100

MICROSCOPES

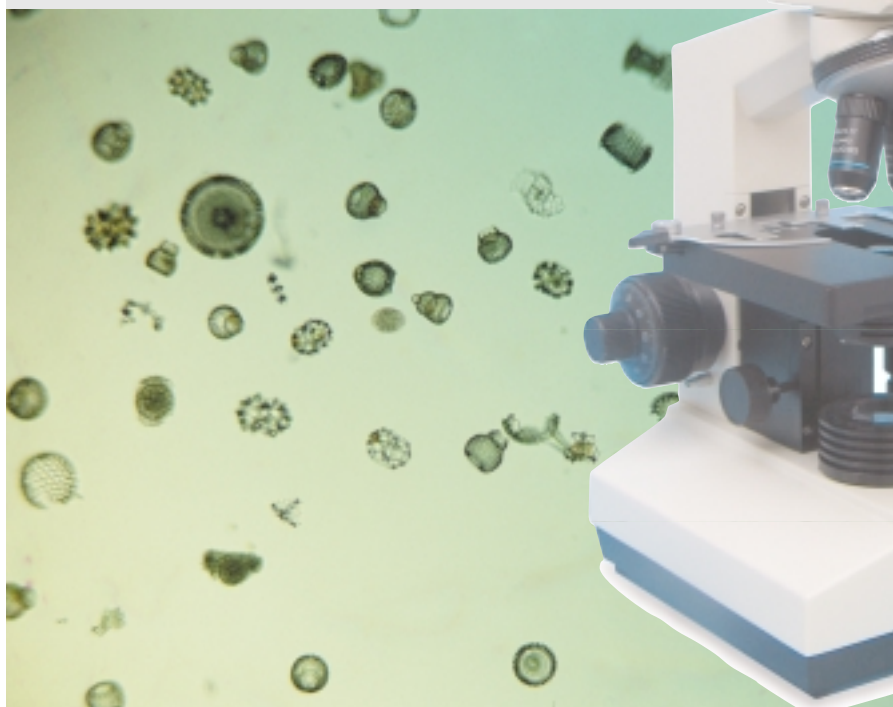
STANDARD SPECIFICATION:

Component	Specifications	BM-100
Head	Monocular head, 30° inclined and 360° rotating	○
	Binocular head of slide type, 45° inclined and 360° rotating	●
	Trinocular head of slide type, 45° inclined and 360° rotating	○
	Binocular head of free compensation, 30° inclined and 360° rotating	○
	Trinocular head of free compensation, 30° inclined and 360° rotating	○
Eyepiece	Wide-field eyepiece WF10X-18 mm, paired	●
	Wide-field eyepiece WF15X-13 mm, paired	●
	Wide-field eyepiece WF20X-11 mm	○
	Wide-field eyepiece WF10X-18 mm with pointer	○
	Wide-field eyepiece WF10X-18 mm with scale	○
Nosepiece	Quadruple nosepiece with built-in click stopper	●
	Quintuple nosepiece with built-in click stopper	○
Objective	DIN achromatic objectives	●
	4X/0.10, 10X/0.25, 40Xr/0.65, 100XR(oil)/1.25	
	DIN achromatic objective 20XR/0.40 (spring loaded)	○
	DIN achromatic objective 60XR/0.85 (spring loaded)	○
	DIN semi-plan achromatic objectives 4X, 10X, 40X, 100XR(oil)	○
	DIN plan achromatic objectives 4X, 10X, 40X, 100XR(oil)	○
Stage	Built-in mechanical stage 140 mm X 140 mm, moving range 50 mm X 76 mm, with specimen holder, controlled by coaxial knobs at low position	●
Condenser & Diaphragm	N.A. 1.25 Abbe Condenser focusable by rack & pinion, iris diaphragm, filters and filter holder	●
Illumination	Built-in electrical illuminator with a halogen bulb 20W/6V, a power switch, a fuse T1A & a fuse holder, a power socket, a power cable. Main power input: 85V-265V	●
Focusing system	Coaxial focusing system with built-in tension adjustment & focus stopper for preventing damage to slide and objectives	●
Optional Accessories	Phase contrast set: DIN achromatic objectives 4X, 10X, 40XR, 100XR(oil); Eyepiece 10X, Abbe N.A. 1.25 condenser	○
	Phase contrast set: DIN plan achromatic objectives 4X, 10X, 40XR, 100XR(oil); Eyepiece 10X, Abbe N.A. 1.25 condenser	○
	Dark-field condenser (dry)	○
	Dark-field condenser (wet)	○
	Wooden case with lock & keys	○
	Packing	Each set in a foam box in a carton
	Each set in a foam box in a wooden case in a carton	○

●: item included ○: item for option

FEATURES:

- Fully coated optical system offers sharp and distinct images over the field of view
- The coaxial focusing with ball-bearing guide works accurately and smoothly over focusing range. It comes with built-in tension adjustment and focus stopper for preventing damage to slides and objectives. Focusing range: 30 mm. Fine focusing graduation: 0.002 mm
- mechanical tube length 160 mm
- Interpupillary distance adjustable between 55-75 mm. Diopter adjustment +/-5 available for both eye tubes
- The integral mechanical stage 132mm x 145mm with specimen holder offers a moving range 50mm X 76mm, which is controlled by coaxial knobs at low position for comfortable operation.
- Wide field eyepieces WF10X and WF15X, one pair each
- A wide range of accessories for option



MICROSCOPES

POWER VISION UNIVERSAL

MODEL 104



MODEL 103:

This microscope is provided with Planachromatic objectives, planoscope eyepieces, Abbe condenser and also coaxial coarse and fine adjustment with focus stop. This microscope with his wide eyepieces gives a nice and sharp image and is designed in a very modern way. It is specially designed for clinical examination and teaching demonstration in laboratories, colleges and medical field. It is also an ideal instrument for biological, bacteriological, patho-logical and pharmaceutical research.

MODEL 104:

This microscope is provided with achromatic objec-tives, planoscope eyepieces, Abbe condenser adjustable built-in light source and also coarse and fine adjustment with focus stop. This microscope with his wide field eyepieces gives a nice and sharp image and is designed in a very modern way. It is specially designed for clinical examination and teaching demonstration in laboratories, colleges and medical field. It is also an ideal instrument for biological, bacteriological, pathological and pharmaceutical research.

MODEL 106:

This microscope is provided with achromatic objec-tives, planoscope eyepieces, Abbe condenser adjustable built-in light source and also coarse and fine adjustment with focus stop. This microscope with his wide field eyepieces gives a nice and sharp image and is designed in a very modern way. It is specially designed for clinical examination and teaching demonstration in laboratories, colleges and medical field. It is also an ideal instrument for biological, bacteriological, pathological and pharmaceutical research.

MODEL 107:

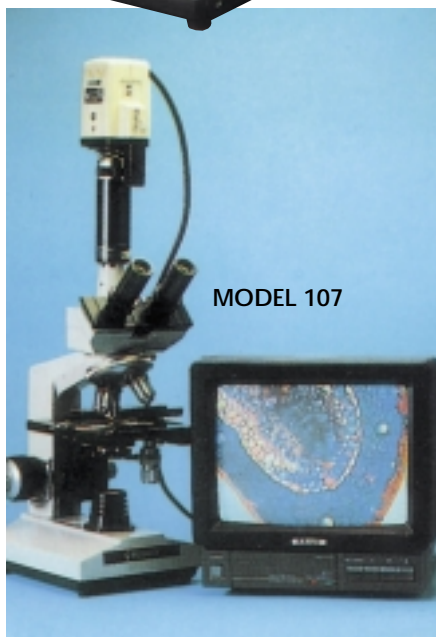
This microscope is provided with planachromatic objectives, planoscope eyepieces, Abbe condenser adjustable built-in light source and also coarse and fine adjustment with focus stop. This microscope is also provided with video system. This microscope with his wide field eyepieces gives a nice and sharpe image and ist designed in a very modern way. It is specially designed for clinical examination and teaching demonstration in laboratories, colleges and medical field. It is also an ideal instrument for biological, bacteriological, pathological and pharmaceutical research.

Specifications see next page!

MODEL 103



MODEL 107



POWER VISION UNIVERSAL

MODEL 109:

This microscope is designed for two persons to view simultaneously and is provided with achromatic objectives, planoscope eyepieces, Abbe condenser, adjustable built-in light source and also coaxial coarse and fine adjustment with focus stop. This microscope with his wide field eyepieces gives a nice and sharp image and is designed in a very modern way. It is specially designed for clinical examination and teaching demonstration in laboratories, colleges and medical field. It is also an ideal instrument for biological, bacteriological, pathological and pharmaceutical research.



MODEL 111

MODEL 111:

This microscope is designed for five persons to view simultaneously and is provided with achromatic objectives, planoscope eyepieces, Abbe condenser, adjustable built-in light source and also coaxial coarse and fine adjustment with focus stop. This microscope with his wide field eyepieces gives a nice and sharp image at every observable place and is designed in a very modern way. It is an ideal demonstration instrument for colleges and laboratories etc. It is also suitable for the consultation and research of a knotty specimen.

MICROSCOPES

MODEL 106



MODEL 109

ITEMS	SPECIFICATION MODEL NR.	101	102	103	104	105	106	107	108	109	110	111
HEAD	Seidentopf Binocular				X	X						
	Sliding Binocular		X	X			X			X	X	X
	Monocular	X									X	
EYEPIECE	Sliding Trinocular							X	X			
	P10X(WF10X) P16X	X	X	X	X	X	X	X	X	X	X	X
ACHROMATIC OBJECTIVES	4X, 10X, 40X(S), 100X(oil)(S)	X	X		X		X		X	X	X	X
PLANACHROMATIC OBJECT.	4X, 10X, 40X(S), 100X(oil)(S)			X		X		X				
MAGNIFICATIONS	40X - 1600X	X	X	X	X	X	X	X	X			X
	50X1250X (auxiliary objective 1.25X)									X	X	
CONDENSER	1.25 N.A. Abbe condenser with iris diaphragm and filter	X	X	X	X	X	X	X	X	X	X	X
REFLECTOR	Plano-concave-mirror	X	X									
ILLUMINATION SYSTEM	6V/20W built-in brightness variable halogen lamp	X	X	X	X	X	X	X	X	X	X	
	24V/100W built-in brightness variable halogen lamp											X
STAGE	Mechanical Stage 124 X 153mm		X	X*	X	X	X	X*	X	X	X	X
	Transversal movement 70mm/74mm											
	Longitudinal movement 50mm											
GROSS WEIGHT	KG	13,5	13,5	13,5	14	14	18,5	14	14	20	25	90
OUTSIDE PACKING MEASUREMENT	39 X 35 X 55 cm	X	X	X	X			X				
	43 X 34 X 68 cm						X					
	27 X 21 X 39 cm									X		
	39 X 35 X 52 cm									X	X	
	56 X16,5 X20cm										X	
OPTIONAL ACCESORIES	Phase contr. attach./40XRD		X	X	X	X	X	X	X			
PHOTOGRAPHIC EQUIPMENT	Microphotographic						X					
TV CAMERA EQUIPMENT	Magnification 0.5X							X	X			
PERSONS										for 2	for 3	for 5

MICROSCOPES

The M2200 series educational microscope was designed to combine state of the art technology with affordability to meet the standards and requirements of schools ranging from Primary to College.



The ST series is a affordable student - proof stereo microscope designed to meet the demands of industry, with three dimensional observation with an erect image at low and medium magnifications making it an ideal instrument for dissecting small specimens, inspecting electrical components, or observing crystals and quality control.



Model: ST 440

M22 SERIES

SPECIFICATIONS AND FEATURES:

- OPTIC** Tripple and quadruple nosepieces with DIN4X(0.1), 10X(0.25), 40XR(0.65) achromatic parfocal, parcentered, and color-coded objectives are standard on all M2200 series compound microscope, as is 10X widefield eyepiece. The DIN 100XR oil immersion (1.25 N.S.) achromatic objectives are available on designated models.
- BODY** The M2200 series comes with a monocular body, 45 degrees inclined, and the head rotates 360 degrees.
- STAGE** The acid and reagent resistant 115 mm x 120 mm large stage, drilled and taped to accept a attachable stage are standard on all M2200 series. Built-in (0.65) condenser with five aperture disk diaphragm and lockd-on, spring-loaded stage clips.
- STAND** Features coarse and fine focuse adjustment with tension control and slip clutch. Positive safety stop on stage adjustment is provided to prevent the objectives and the specimen from accidental damage. The M2200 features built-in illuminator 110V/20W and a on and off switch at the base of the unit.
- OPTIONS** The M2200 series gives you the options of dual-viewing tube, attachable graduated mechanical stage, stage with Abbe condenser N.A. 1.25 and iris diaphragm, quadruple nosepiece, 100X/1.25 DIN achromatic objective.

MODEL	BODY	EYEPIECES	OBJECTIVES	CONDENSER	STAGE	ILLUMINATOR
M2201	Monoc.	WF10X	4X/10X/40X DIN	N.A. 0.65 Dise Diaphragm	Fine & Coarse	Mirror
M2201L	Monoc.	WF10X	4X/10X/40X DIN	N.A. 0.65 Dise Diaphragm	Fine & Coarse	Built-in 110V/20W
M2201DL	Dual	WF10X	4X/10X/40X DIN	N.A. 0.65 Dise Diaphragm	Fine & Coarse	Built-in 110V/20W
M2202L	Monoc.	WF10X	4X/10X/40X DIN	N.A. 0.65 Iris Diaphragm	Fine & Coarse	Built-in 110V/20W
M2203	Monoc.	WF10X	10X/40X 100X (oil)DIN	N.A. 1.25 Iris Diaphragm	Fine & Coarse	Built-in 110V/20W
M2204	Monoc.	WF10X	4X/10X/40X 100X (oil)DIN	N.A. 1.25 Iris Diaphragm	Fine & Coarse	Built-in 110V/20W

ST SERIES

SPECIFICATIONS AND FEATURES ST220, ST330, ST440:

- OPTIC** The ST series stereo microscope features a paired widefield 10X eyepieces with safety locks, an 2X objective, locked-on.
- BODY** The ST series features a choice of vertical or 45 degree inclined binocular head, Diopter adjustment on one eyetube, interpupillary adjustment from 51mm to 75mm, working distance of 80mm, rack and pinion focusing with tension adjustment and slip clutch, body may be raised or lowered and is adjustable on pillard stand, rotates 360 degrees and has a stop to prevent head removal.
- STAGE** Reversible black and white contrast and frosted stage plates 85mm and located-on with loaded metal spring stage clips.
- ILLUMINATION** ● Model ST 220 it comes with Non illumination.
● Model ST 330 and ST 440 comes with built-in illuminator 12V 10W, transmitted and reflected light.
● Three position switch for off, reflected light, or transmitted light.
- OPTIONS** The ST series gives you the options widefield 15X eyepieces and 1x,3x,4x and 6x and objectives available separately.

FEATURES ST660:

- OPTICS** The ST 660 series stereo microscope features a paired widefield 10X eyepieces with safety locks, and inclined binocular body with two selected powers; 1x/2x, 1x/3x, 1x/4x, or 2x/4x. The working distance is 65mm, interpupillary adjustment distance from 55mm to 75mm and diopter adjustment on one eyepiece tube.
- FOCUSING** The ST 660 series features a rack and pinion focusing system and a safety slip clutch and tension control.
- STAGE** A 75mm diameter frosted stage plate.
- ILLUMINATION** The ST 660 comes with a built-in reflected and transmitted illumination 110V/15W and a four light switch; reflected light, transmitted light, reflected and transmitted light, or off.

MODEL	BODY	EYEPIECES	OBJECTIVES	ILLUMINATOR	MAGNIFICATION
ST220	Vertical	WF10X	2X	None	20X
ST220A	Vertical	WF15X	2X	None	30X
ST330	Vertical	WF10X	2X	Top & Bottom	20X
ST330A	Vertical	WF15X	2X	Top & Bottom	30X
ST440	Inclined	WF10X	2X	Top & Bottom	20X
ST440A	Inclined	WF15X	2X	Top & Bottom	30X
ST662	1X, 2X	WF10X		Built-in	10X and 20X
ST663	1X/ 3X	WF10X		Built-in	10X and 30X
ST664	1X, 4X	WF10X		Built-in	10X and 40X
ST668	2X, 4X	WF10X		Built-in	20X and 40X

MODEL SQF-D STEREO ZOOM

MODEL	BODY	EYEPIECES	OBJECTIVES	CONDENSER	STAGE	ILLUMIN.
4030200	Monoc.	10X, 16X	4X/10X/40X	NA 1.25 & iris diaphragm	Square	Mirror
4030300	Monoc.	WF10X	4X/10X/40X	NA 0.65 & 5 holes diaphragm	Square	Mirror
4030400	Monoc.	WF10X	4X/10X/40X	NA 0.65 & 5 holes diaphragm	Square	Mirror
4030500	Monoc.	WF10X	10X/40X/ 100X (oil)	NA 1.25 & iris diaphragm	Square	20W/6V
4030600	Monoc.	WF10X	10X/40X/ 100X (oil)	NA 1.25 & iris diaphragm	Square	20W/6V
MODEL SQF-D			OBJECTIVES 0.7x-4.5x			
EYEPIECES						
SUPPLEMENTARY LENS		-	0.5x	1.5x	2.0x	
WF10x	Total Mag.	7x~45x	3.5x~22.5x	10.5x~67.5x	14x~90x	
	Field Diam(mm)	32.8~5.1	65~10.2	21.6~3.4	16.4~2.6	
WF15x	Total Mag.	10.5x~67.5x	5.25x~33.75x	15.75x~101.25x	21x~135x	
	Field Diam(mm)	22~3.4	44~6.8	14.6~2.2	11~1.7	
WF20x	Total Mag.	14x~90x	7x~45x	21x~135x	28x~180x	
	Field Diam(mm)	16.4~2.6	32.8~5.2	10.9~1.7	8.2~1.3	
WORKING	Distance(mm)	93	150	49	34	

MICROSCOPES



Zoom microscope
Model: SQF-D

SURGICAL MICROSCOPE

SPECIFICATIONS AND FEATURES:

YSX SERIES LIGHTWEIGHT OPERATION MICROSCOPE

Due to the different ways of fixation, working distance and magnification, 12 models of instruments for different purpose can be assembled with different parts. All models are equipped with halogen-tungsten lamp and fibre - optic coaxial illumination. They can meet the needs of the orthopedics, surgery, brain surgery, ear - nose - throat surgery, ophthalmology, gynecology etc. Because of the lightweight and flexibility, they can also be used in microscopy and diagnosis of diseases.

- **Observation unit:** Binocular straight observation unit $f^1 = 87\text{ mm}$.
Binocular fitted observation unit $f^1 = 87\text{ mm}$ and $f^2 = 174\text{ mm}$.
- **Focal length of objective assembly:**
 $f^1 = 200\text{ mm}$, $f^2 = 250\text{ mm}$, $f^3 = 300\text{ mm}$, $f^4 = 400\text{ mm}$.
- **Division value on handwheel:** $0 \cdot 6^X$, 1^X , $1 \cdot 6^X$
- **Stand:** both floor type and table type available.
- **Movable arm:** both long and short arms available.

Model YSX - 101 (Binocular straight observation, long arm and floor type)

Model YSX - 102 (Binocular tilted observation, long arm and floor type)

Model YSX - 104 (Binocular straight observation, long arm and table type)

YSX - 107 II BINOCULAR OPERATION MICROSCOPE

- Cold light source illumination.
- Camera (pickup camera) or demonstrator attachable.
- Wide application in orthopedics, surgery, brain surgery, ophthalmology and gynecology etc.

YDJ COLPOSCOPE

The pathology in cervix and vagina, which are invisible to the naked eye, can be seen through colposcope by the magnifying action of the instrument. It is helpful to the vaginal cell smear and pathological section for microscopy. It is an essential instrument for the general survey of the gynecology disease and the treatment of the pathology in the early stage.

- **Working distance:** 230 mm (or 280 mm)
- **Magnification:** 10^X
- **Linear field:** 26mm
- **Resolution:** 80 LP/mm

LDX SLIT LAMP MICROSCOPE

Making use of the tidy optical section projected from the slit lamp precise examination can be made on the pathology in corner, eyelid, atria, sclera iris, crystalline lens, vitreum and retina.

- **Microscope:** Magnification: Step magnification change $4^X \cdot 6^X \cdot 10^X \cdot 15^X$ and 25^X .
- **Slit lamp:** Slit image: Vertical 0-8 mm: transverse 0-8 mm. A round image is available when both slits are 8 mm in size. Both slits can be rotated 90° .
- **Filter:** 5 filters (neutral, green, yellow and phosphor interference) are available for monochrome eye examination. Both demonstrator and camera are attachable.



YSX-301B

Item	Optical focal length	Magnification on handwheel	Total magnification	Linear field mm	Resolution mm
Microscope	F=180 mm	2.5x	41.6x	5	67
		1.5x	25x	8	45
		1x	16.6x	12	56
		0.66x	11.2x	18	33
		0.4x	6.7x	30	33
Demonstrator	F=300 mm	1.6x	8x	23	37.5
		1x	5x	37.9	23.6
		0.6x	3x	60.8	23.6

Working distance 170 mm

MICROSCOPES

XDS-1 INVERTED BIOLOGICAL MICROSCOPE

The XDS-1 Inverted Biological Microscope can be used in many fields, such as Biological Medicine, Environmental Protection etc.

Features:

- LWD Plan achromatic objectives and LWD plan achromatic phase contrast objectives
- LWD condenser
- inverted structure
- especially suitable for Cell Culture and living cell observation
- can be equipped with photo and CCD attachment



Order-No.	Items	Standard Outfit
Head	Main Body (including left & right supporting arm plate, 4 pieces of Allen screws & a wrench)	●
EW10	Eyepiece WF10 x / \bar{y} 20	● ●
EW16	Eyepiece WF16 x / \bar{y} 14	● ●
EC11	Centering Eyepiece DZ11 x	●
EPr10b	Plan Artical Eyepiece PF 10 x	●
B-OLPr10	LWD Plan achromatic objective 10/0.25, 160/1.5, W.D.=7.9 mm	●
B-OLPr25	LWD Plan achromatic objective 25/0.40, 160/1.5, W.D.=5 mm	●
B-OLPr40	LWD Plan achromatic objective 40/0.60, 160/1.5, W.D.=3 mm	●
B-OLPnr10	LWD Plan Phase contrast objective 10/0.25, 160/1.5, W.D.=7.9 mm	○
B-OLPnr25	LWD Plan Phase contrast objective 25/0.40, 160/1.5, W.D.=5 mm	●
B-OLPnr40	LWD Plan Phase contrast objective 40/0.60, 160/1.5, W.D.=3 mm	○
	35 mm DF Camera with shutter control line	○
33X-4	Set for Stage Insert Plate	●
9J8	Stage Insert Plate (III)	●
9J9	Stage Insert Plate (IV)	●
33X-5	Stage Insert Plate (V)	● ●
CL02	Stage Clips	● ●
7X.5.1	Cultural Flask (bottom thickness 1.5 mm)	● ●
7X.5.2	Cultural Vessel (bottom thickness 1.5 mm)	● ●
RP06	Annular Spot 10 x O 12X.2.3-19,20 Annular Spot 25 x	● ●
RP07	Annular Spot 40 x O Halogen Tungsten Lamp 6V 20W (G4)	● ● ●
9J.7	Photo Adaptor With Photo Eyepiece S5 x	●
33X.3.2.1	Movable Condenser Insert Plate	●
TBR03	Seidentopf Binocular Head (45° inclined)	●
	Micrometer (division 0.01 mm)	○
EPHp6.3	Photo Eyepiece S6.3 x	○
9J.15	Photo Eyepiece S0.65 x For CCD	○
CU43-3	C-mount	○
	CCD TV & Record Attachment	○

●: standard attachment ○: optional accessories

INSTRUMENT DIMENSION: 498mm x 300 mm x 274 mm

NET WEIGHT: 15 kg

PACKAGE DIMENSION: 655mm x 475mm x 310 mm

GROSS WEIGHT: 18 kg

AXIOM  [®]
 D I A G N O S T I C
**Gesellschaft für Diagnostica
 und Biochemica mbH**

Am Jahnplatz 5 · 68642 Bürstadt/Germany · Tel.: 49-(6206)60 11/12 · Fax: 49-(6206)60 13 · E-Mail: Info@AXIOM-Online.net
 9300 N.W. 58 Street · Suite #207 · Miami, Florida 33178 · Telefon: 1-(305)513-8998 · Telefax 1-(305)513-8998 ·
 E-Mail: Info@AXIOM-Online.net · Webpage for both companys: <http://www.AXIOM-ONLINE.NET>